



CONTROL DAMPER  
**OBX-4H6**  
 OPOSED BLADE



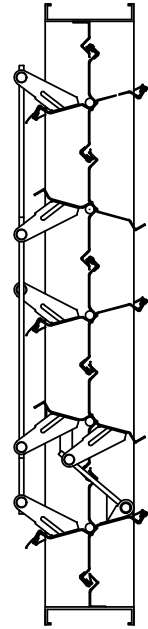
[www.westvent.com](http://www.westvent.com)

[www.westernhvac.ca](http://www.westernhvac.ca)

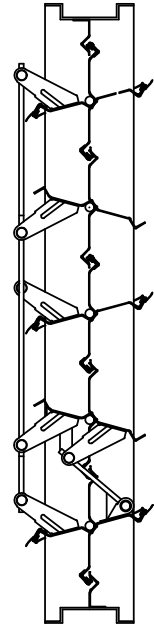
## STANDARD CONSTRUCTION

<b>MATERIAL</b>	6063-T5 EXTRUDED ALUMINUM
<b>BLADE</b>	0.05" (1.3 mm) NOMINAL
<b>BLADE ANGLE</b>	0-90 DEGREES
<b>BLADE SPACING</b>	5.8" (147 mm)
<b>FRAME</b>	.05" (1.3 mm) NOMINAL
<b>DEPTH</b>	4.5" (114 mm)
<b>CONSTRUCTION</b>	GTAW / GMAW WELDED
<b>LINKAGE</b>	IN THE AIR STREAM
<b>BUSHINGS</b>	NYLON, BRONZE OILITE, BEARING
<b>UNDERSIZE</b>	0.25" (6 mm)
<b>MINIMUM SECTION SIZE</b>	8" W x 8" H (203 mm)
<b>MAXIMUM SECTION WIDTH</b>	48" H (3658 mm)
<b>MAXIMUM SECTION HEIGHT</b>	72" H (3658 mm)
<b>MAXIMUM SIZE</b>	UNLIMITED
<b>MAX VELOCITY</b>	2000 F.P.M.

CHANNEL FRAME



HAT CHANNEL FRAME



## DAMPER OPTIONS

### CONSTRUCTION MATERIAL

- ALUMINUM (STANDARD)
- GALVANIZED STEEL
- STAINLESS STEEL (304, 316)

### FRAME

- CHANNEL FRAME
- FLANGE FRAME
- HAT CHANNEL FRAME

### SCREENS

- 0.5" (13 mm) ALUMINUM BIRD SCREEN IN FRAME
- 0.75" (19 mm) ALUMINUM BIRD SCREEN IN FRAME
- 0.75" (19 mm) GALVANIZED WELDED BIRD SCREEN
- #8 GALVANIZED WELDED BUG SCREEN
- VARIETY OF EXPANDED METAL SCREENS

### FINISH

- MILL FINISH STANDARD

### OTHER

- BLANK OFF PANEL
- SLEEVE
- FILTER RACK
- WALL HOOD
- LOUVER

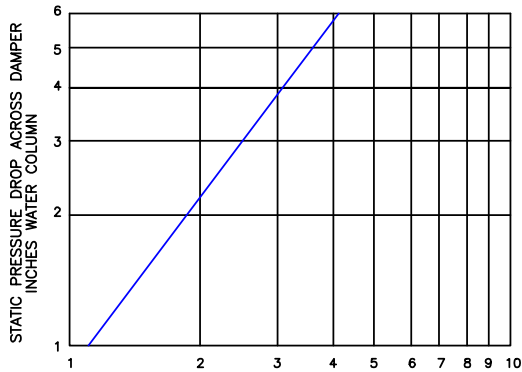


CONTROL DAMPER  
**OBX-4H6**  
 OPOSED BLADE



www.westvent.com

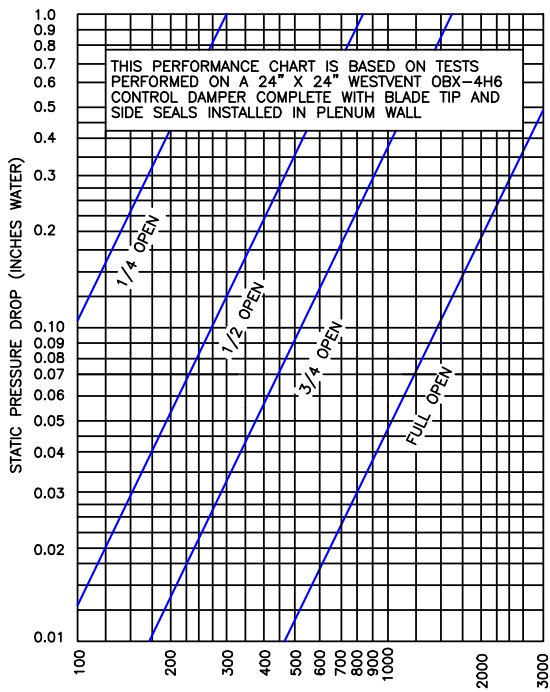
www.westernhvac.ca



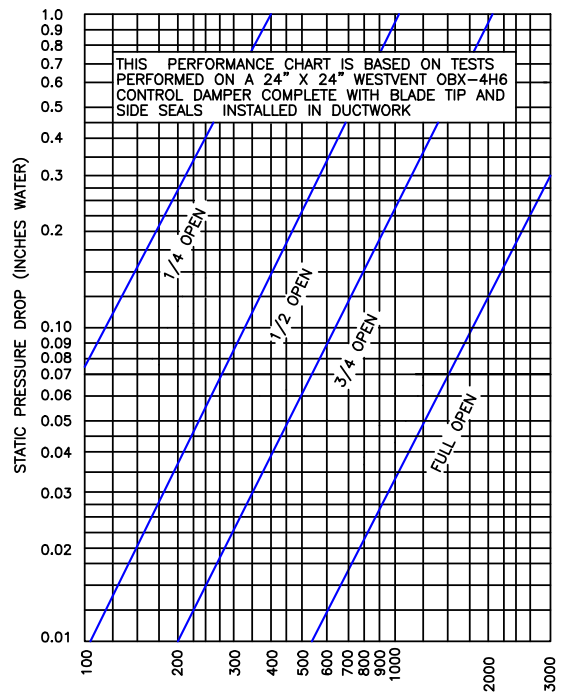
AIR LEAGAGE VOLUME IN C.F.M./SQ.FT.  
**AIR LEAGAGE CHART**  
 STANDARD AIR - 0.075 LBS.

TORQUE REQUIREMENT CHART: INCH - LBS./SQ. FT.		
1000 F.P.M. @ 2" W.G.	1000 - 2000 F.P.M. @ 3" W.G. (X 1.5)	1000 - 2000 F.P.M. @ 4" W.G. (X 2.0)
5 IN. LBS./SQ. FT.	7.5 IN. LBS./SQ. FT	10 IN. LBS./SQ. FT

MAXIMUM SYSTEM PRESSURE			
12" WIDE 4" SP W.G.	24" WIDE 4" SP W.G.	36" WIDE 3" SP W.G.	48" WIDE 2.5" SP W.G.



VELOCITY FREE AREA (FPM)  
**AIR PERFORMANCE GRAPH**



VELOCITY FREE AREA (FPM)  
**AIR PERFORMANCE GRAPH**