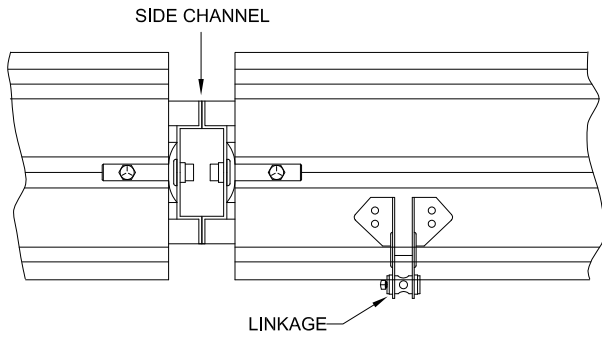
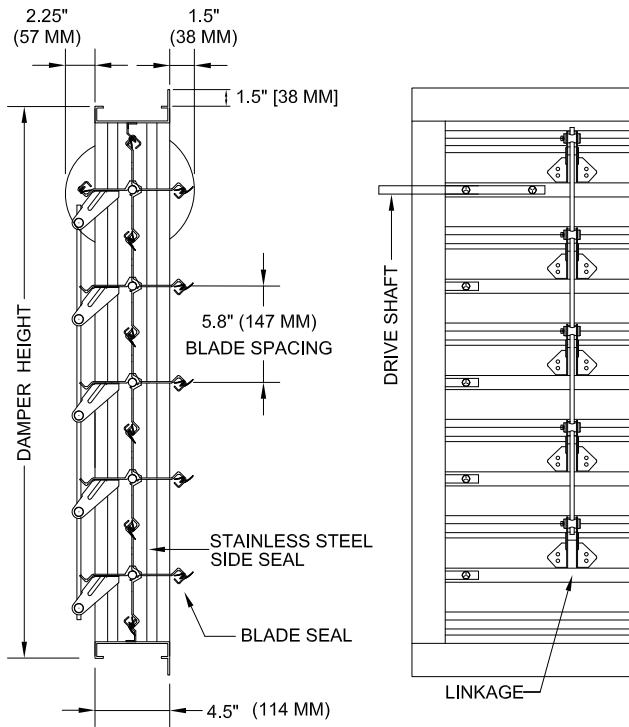




ALUMINUM PARALLEL BLADE DAMPER PBX-4L6



MULTIPLE SECTION DETAIL



SECTION

ELEVATION

STANDARD SPECIFICATIONS

- CONST. - EXTRUDED ALUMINUM WELDED FRAME, MITERED CORNERS GUSSETS, MULLIONS AND SPREADER BARS ON ALL SECTIONS 48" (1219.2MM) AND LARGER
- FRAME - 4" X 1" X .125" (114.3MM X 19.1MM X 3.2MM) EXTRUDED ALUMINUM CHANNEL w/ 1.5" FLANGE
- BLADES - 6" X .064" (152.4MM X 1.6MM) EXTRUDED ALUMINUM, 5.8" (147.3MM) BLADE SPACING
- SEALS - DUAL DUROMETER VINYL BLADE SEAL, -40 DEG. F. TO +200 DEG. F., S.S. SIDE SEALS
- SHAFTS - .5" (12.7MM) DIA. C.R. PLATED STEEL
- BEARINGS - .5" (12.7MM) OILITE BRONZE BUSHINGS
- LINKAGE - IN AIRSTREAM, ROD TRAVEL 5.25" (133.4MM)
- DRIVE - .5" (12.7MM) DIA. C.R. PLATED STEEL EXTENDING SHAFT
- SHAFT - 6" (154.4MM) OUT OF FRAME
- FINISH - MILL ALUMINUM
- SIZE - MINIMUM 8" W X 8" H (203.2MM X 203.2MM) MAXIMUM 48" W X 72" H (1219.2MM X 1828.8MM)

OPTIONS

- BEARINGS - .5" (12.7MM) NYLON BUSHINGS
.5" (12.7MM) BALL BEARING
- CONTROL - MANUAL, JACK SHAFT, MOTORIZED

TECHNICAL NOTES

- CAUTION - ADVISE ON TYPE OF APPLICATION
- MAX. RECOMMENDED VEL. - 2000 FPM
- MAX. SYSTEM PRESSURE - SEE CHART
- MAXIMUM TEMP. - 200° F.
- LEAKAGE - LESS THAN .5% AT 4" W.G.
- SHIPPING WEIGHT - APPROX. 5 LB/SQ. FT.
- LARGER SIZES - MULTIPLE SECTIONS WILL BE PROVIDED FOR RE-ASSEMBLY BY OTHERS

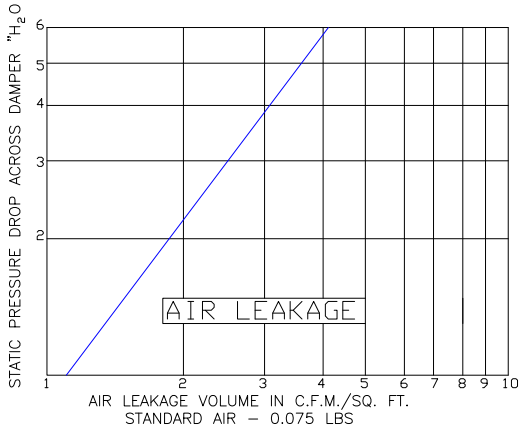
DAMPER IS MANUFACTURED .25" (6.4MM) SMALLER THAN ORDERED SIZE UNLESS EXACT DIMENSIONS ARE STATED

NOTES

APPROVAL

DATE:
PROJECT:
ENGINEER:
CUSTOMER:
DISTRIBUTOR:

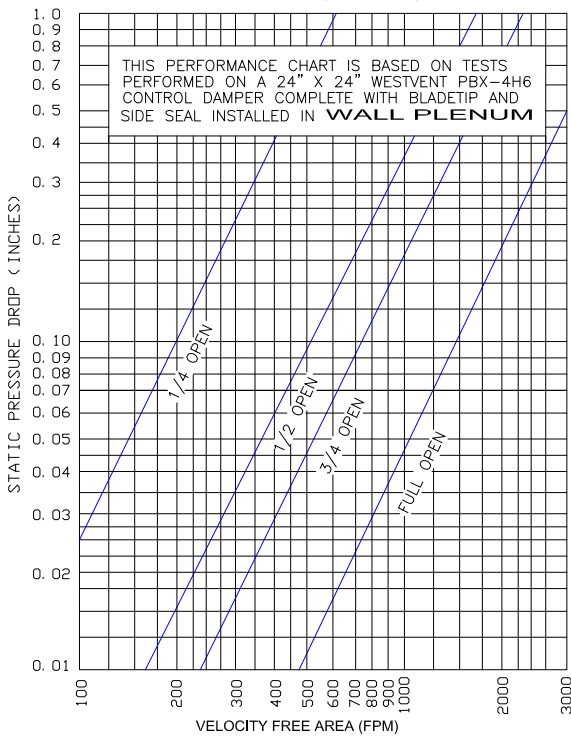
ALUMINUM PARALLEL BLADE DAMPER PBX-4L6



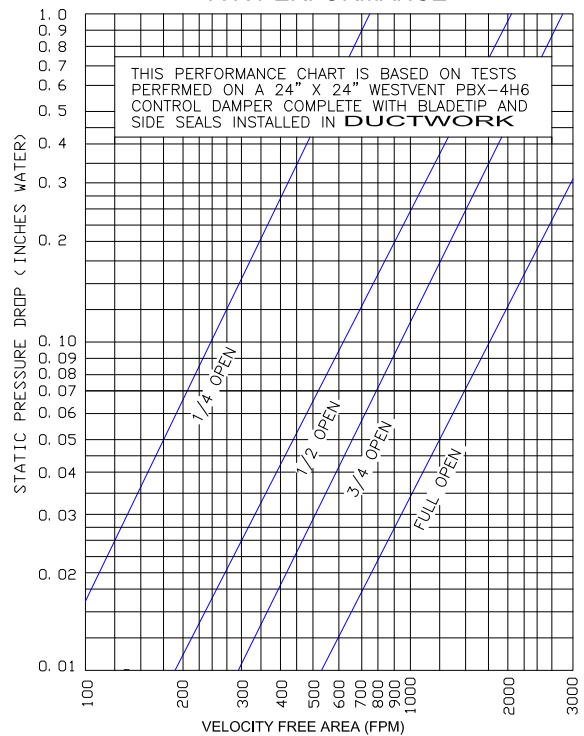
TORQUE REQUIREMENT CHART: INCH - LBS./SQ. FT.		
1000 F.P.M. @ 2" W.G.	1000 - 2000 F.P.M. @ 3" W.G. (X 1.5)	1000 - 2000 F.P.M. @ 4" W.G. (X 2.0)
7 IN. LBS./SQ. FT.	10.5 IN. LBS./SQ. FT	14 IN. LBS./SQ. FT

MAXIMUM SYSTEM PRESSURE			
12" WIDE 4" SP W.G.	24" WIDE 4" SP W.G.	36" WIDE 3" SP W.G.	48" WIDE 2.5" SP W.G.

AIR PERFORMANCE



AIR PERFORMANCE



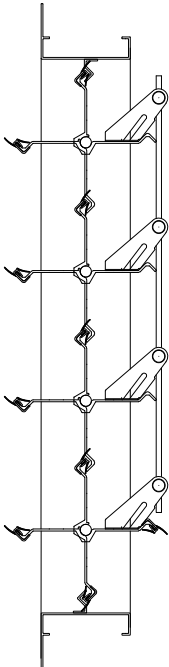
THE INFORMATION CONTAINED ON THIS DATA SHEET REMAINS THE PROPERTY OF WESTERN VENTILATION PRODUCTS LTD. AND IS PROTECTED BY COPYRIGHT. WESTVENT AIR PERFORMANCE RATINGS SHOWN ARE BASED ON TESTS MADE BY TECHNICIANS IN OUR TEST LABORATORY.

"WESTVENT" RESERVES THE RIGHT TO MAKE CHANGES TO IMPROVE OUR PRODUCTS WITHOUT NOTICE. NOVEMBER 15, 2005



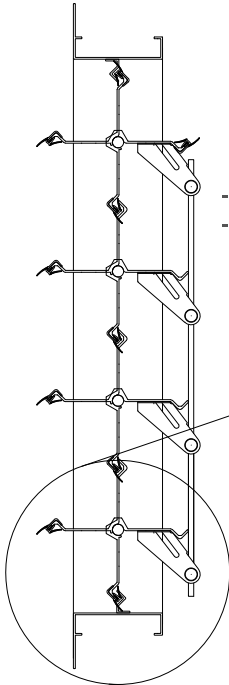
ALUMINUM PARALLEL BLADE DAMPER

PBX-4L6 CONFIGURATIONS



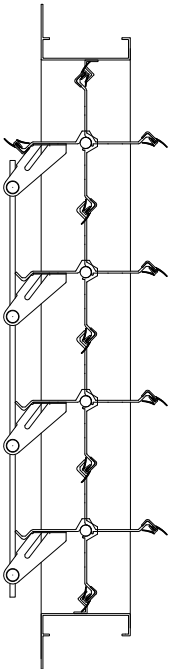
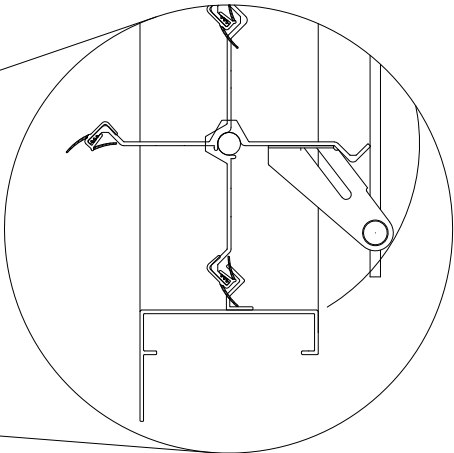
STYLE #1

- LINKAGE ON BACK
- BLADES WILL FALL CLOSED



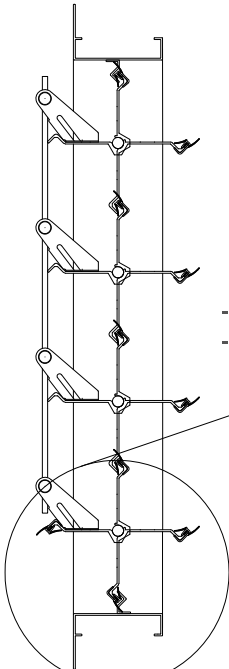
STYLE #2

- LINKAGE ON BACK
- BLADES WILL FALL OPEN



STYLE #3

- LINKAGE ON FRONT
- BLADES WILL FALL OPEN



STYLE #4

- LINKAGE ON FRONT
- BLADES WILL FALL CLOSED

