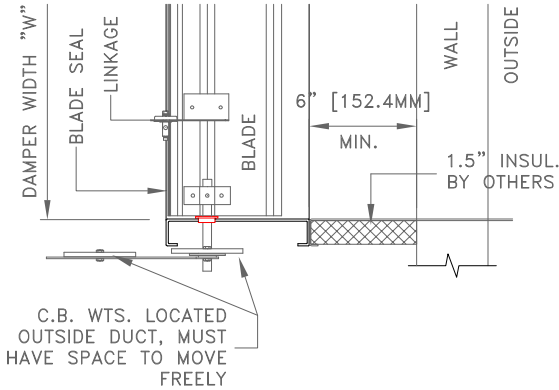
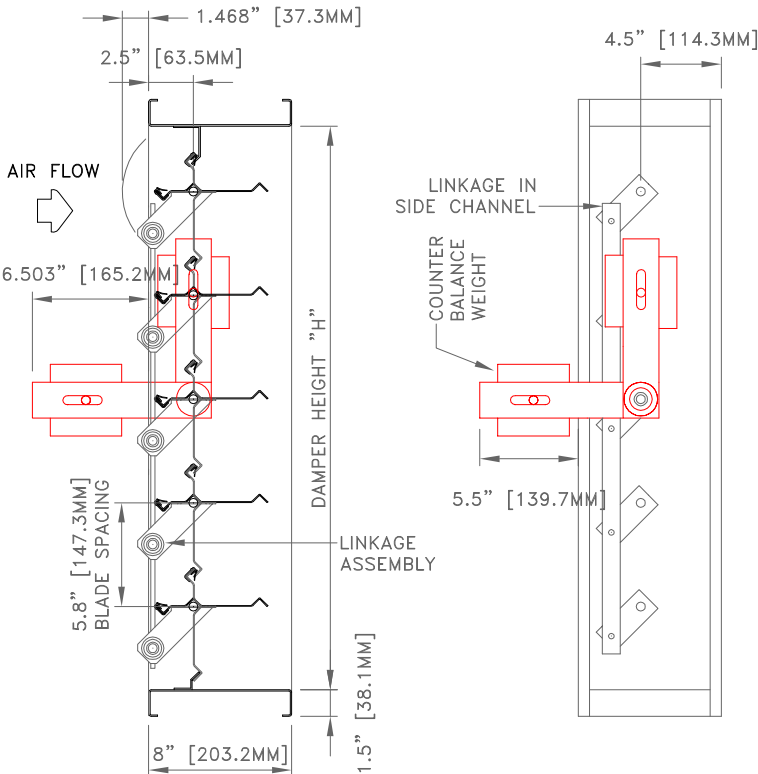




INDUSTRIAL BACK DRAFT DAMPER BD-8C6-LI & LS



HORIZONTAL SECTION
(TOP VIEW)



BD-8C6-LI
(SECTION)

BD-8C6-LS
(SIDE VIEW)

STANDARD SPECIFICATIONS

- CONST. - FORMED STEEL FRAME AND ALUMINUM BLADES
- FRAME - 8" X 1.5" X .079", 12 GA. (203.2MM X 38.1MM X 2.8MM) C-CHANNEL FORMED STEEL, BUTT CORNER, WELDED ASSEMBLY,
- BLADES - 14 GA. FORMED ALUMINUM, OPENS TO 90°, 5.88" (149.4MM) BLADE SPACING
- SEALS - DUAL DUROMETER BLADE TIP SEALS
- SHAFTS - .5" (12.7MM) DIA. C.R. PLATED STEEL
- BEARINGS - .5" (12.7MM) I.D. PRESSED IN PLATED STEEL BALL BEARINGS
- LINKAGE - STEEL INSIDE AIRSTREAM LI, OR OUTSIDE AIRSTREAM LS
- C.B. WTS. - 4" X 4" .5" (101.6MM X 101.6MM X 12.7MM) STEEL, INSTALLED AT FACTORY
- FINISH - MILL
- SIZE - MINIMUM 12" X 12" (304.8MM X 304.8MM) MAXIMUM 48" X 72" (1219.2MM X 1828.8MM)

OPTIONS

- CONST. - HEAVIER GAUGES
- FRAME - AS REQUIRED
- BLADES - AS REQUIRED
- BEARINGS - .5" (12.7MM) NYLON BUSHINGS

TECHNICAL NOTES

- MAX. RECOMMENDED VEL. - 3000 F.P.M.
- SHIPPING WEIGHT - APPROX. 6 LBS./SQ. FT.

INDUSTRIAL DAMPERS ARE MANUFACTURED TO INSIDE DIMENSIONS UNLESS OTHERWISE STATED

* FOR MORE INFORMATION, CONTACT OUR FACTORY *

NOTES		APPROVAL	
<ol style="list-style-type: none"> 1. COUNTER BALANCE WEIGHTS MUST NOT BE REMOVED OR RELOCATED 2. BACKDRAFT DAMPER UNIT MUST NOT BE PLACED IN, OR TOO CLOSE TO WALL 3. THESE DAMPERS WILL NOT OPERATE EFFECTIVELY IF COUNTER BALANCE WEIGHTS ARE REMOVED 4. REMOVING COUNTER BALANCE WEIGHTS WILL VOID WARRANTY 			
DATE: PROJECT: ENGINEER: CUSTOMER: DISTRIBUTOR:			

BD-8C6-LI & LS