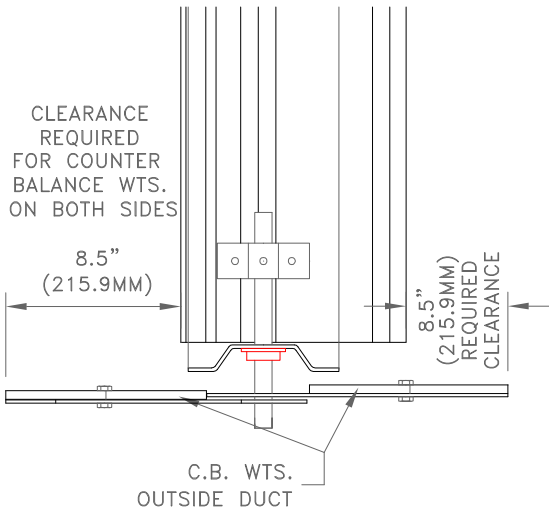
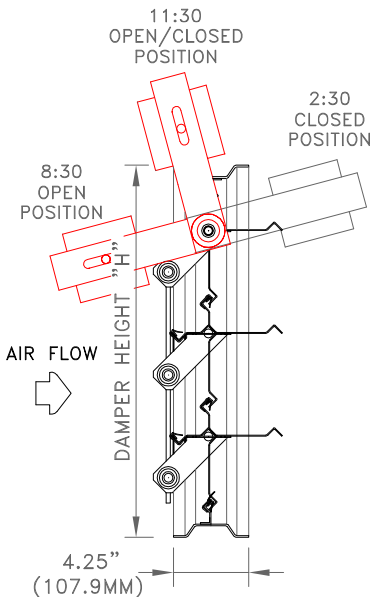




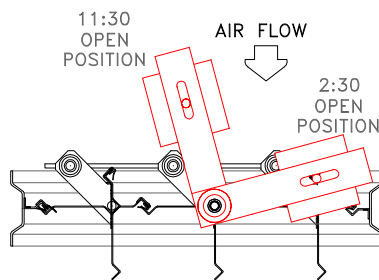
# INDUSTRIAL BACK DRAFT DAMPER BDS-4H6-LI



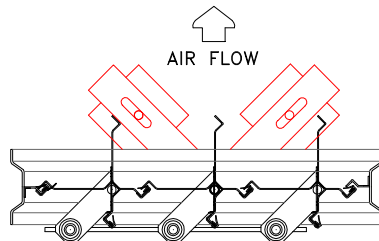
**HORIZONTAL SECTION**  
(1:2 FROM DRAWING BELOW)



**VERTICAL DAMPER**  
SIDE VIEW



**HORIZONTAL INTAKE  
DAMPER**



**HORIZONTAL EXHAUST  
DAMPER**

STANDARD SPECIFICATIONS

- CONST. - FORMED GALVANIZED STEEL, WELDED ASSEMBLY
- FRAME - 4" X .75" X .079", 12 GA. (101.6MM X 25.4MM X 2.8MM) HAT CHANNEL
- BLADES - 6" X .064", 16 GAUGE, OPENS TO 90°, 5.8" (147.3MM) BLADE SPACING
- SEALS - DUAL DUROMETER BLADE TIP
- SHAFTS - .5" (12.7MM) DIA. C.R. PLATED STEEL SHAFTS
- BEARINGS - .5" (12.7MM) I.D. PLATED STEEL BALL BEARINGS
- LINKAGE - STEEL INSIDE AIRSTREAM
- C.B. WTS. - STEEL, INSTALLED AT FACTORY, TO BE FIELD ADJUSTED TO SUIT APPLICATION
- FINISH - MILL GALVANIZED STEEL
- SIZE - MIN. 12" X 12" (304.8MM X 304.8MM)  
MAX. 48" X 72" (1219.2MM X 1828.8MM)

TECHNICAL NOTES

- MAX. RECOMMENDED VEL. - 2000 F.P.M.
- SHIPPING WEIGHT - APPROX. 9 LBS./SQ. FT.
- MAXIMUM TEMPERATURE - 200° F

*DAMPERS ARE MANUFACTURED .25" (6.4MM) SMALLER THAN ORDERED SIZE UNLESS EXACT DIMENSIONS ARE STATED.*

\* FOR MORE INFORMATION, CONTACT OUR FACTORY \*

NOTE: PLEASE SPECIFY HORIZONTAL OR VERTICAL MOUNTING

## NOTES

1. COUNTER BALANCE WEIGHTS **MUST NOT** BE REMOVED OR RELOCATED
2. BACKDRAFT DAMPER UNIT **MUST NOT** BE PLACED IN, OR TOO CLOSE TO WALL
3. THESE DAMPERS WILL NOT OPERATE EFFECTIVELY IF COUNTER BALANCE WEIGHTS ARE REMOVED
4. REMOVING COUNTER BALANCE WEIGHTS WILL VOID WARRANTY

DATE:  
PROJECT:  
ENGINEER:  
CUSTOMER:  
DISTRIBUTOR:

## APPROVAL

BDS-4H6