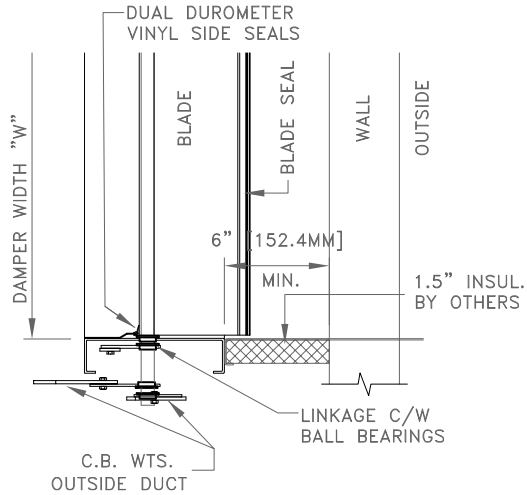
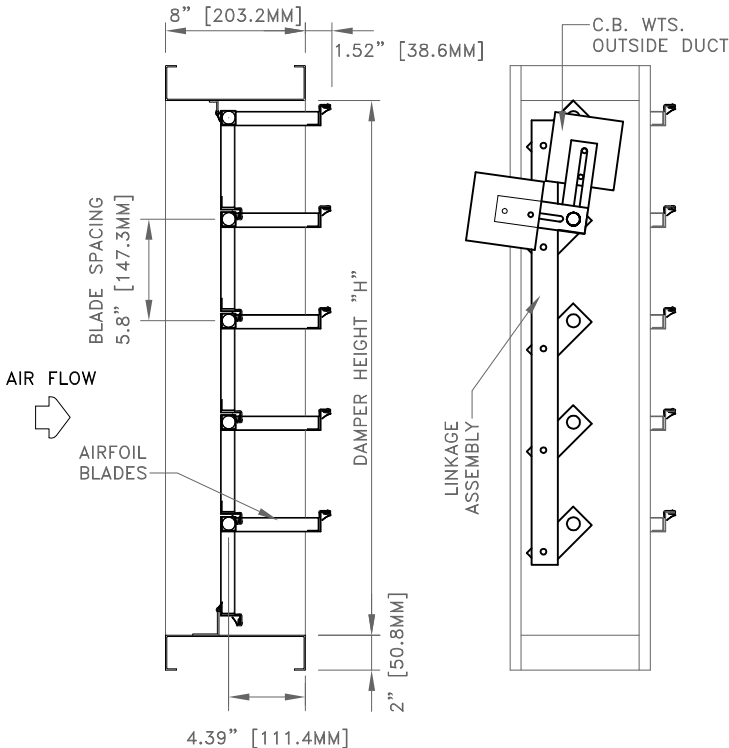




INDUSTRIAL STEEL AIRFOIL BACK DRAFT DAMPER BDS-8C6-AF



HORIZONTAL SECTION



SECTION

SIDE VIEW

STANDARD SPECIFICATIONS

- CONST. - FORMED GALVANIZED STEEL
- FRAME - 8" X 2" X .108", 12 GA. (203.2MM X 50.8MM X 2.8MM) C-CHANNEL GALVANIZED STEEL, BUTT CORNER, WELDED ASSEMBLY, WELDS COATED WITH ZINC RICH PAINT
- BLADES - 6" (152.4MM) X 20 GA. GALVANIZED STEEL C/W AIR FOIL DESIGN. 5.8" (147.32MM) BLADE SPACING
- SEALS - DUAL DUROMETER BLADE TIP & SIDE SEALS
- SHAFTS - .75" (19.1) DIA. C.R. PLATED STEEL CONTINUOUS SHAFTS
- BEARINGS - .75" (19.1) I.D. PLATED STEEL BALL BEARINGS
- LINKAGE - PLATED STEEL CRANK ARMS C/W .25" (6.4MM) BALL BEARINGS AND CONNECTING FLAT BAR LINKAGE, OUT OF AIRSTREAM
- C.B. WTS. - ADJUSTABLE OUTSIDE THE AIR STREAM
- FINISH - MILL GALVANIZED
- SIZE - MINIMUM 8" X 8" (203.2MM X 203.2MM) MAXIMUM 48" X 72" (1219.2MM X 1828.8MM)

OPTIONS

- OTHER MATERIALS - STAINLESS STEEL (BDSS-8C6-AF)

TECHNICAL NOTES

- MAX. RECOMMENDED VEL. - SEE PERFORMANCE CHART
- MAX. STATIC PRESSURE - SEE PERFORMANCE CHART
- MAX. TEMPERATURE - 200° F.
- LEAKAGE - SEE PERFORMANCE CHART

INDUSTRIAL DAMPERS ARE MANUFACTURED TO INSIDE DIMENSIONS UNLESS OTHERWISE STATED

* FOR MORE INFORMATION, CONTACT OUR FACTORY *

NOTES

APPROVAL

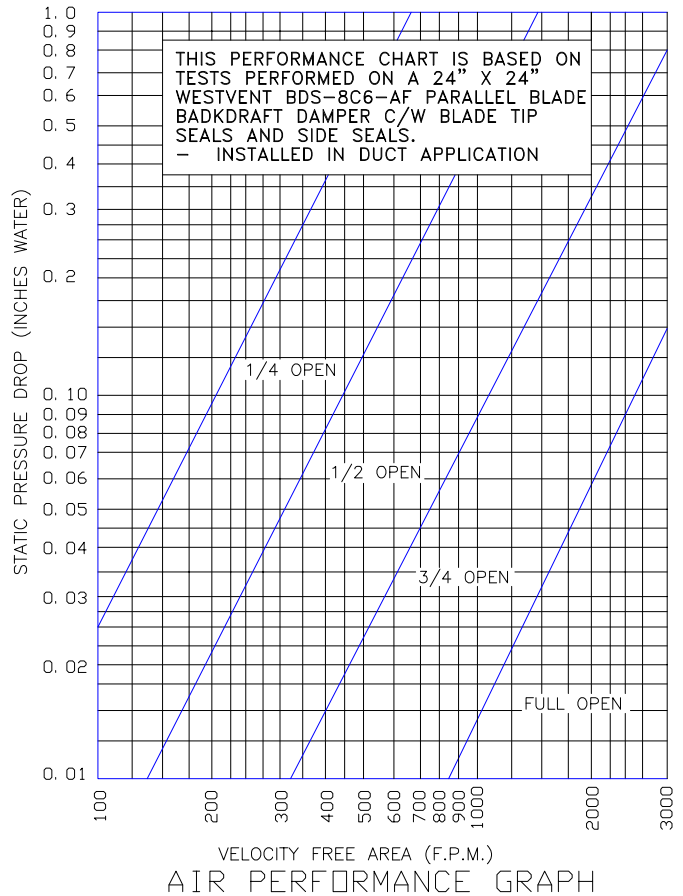
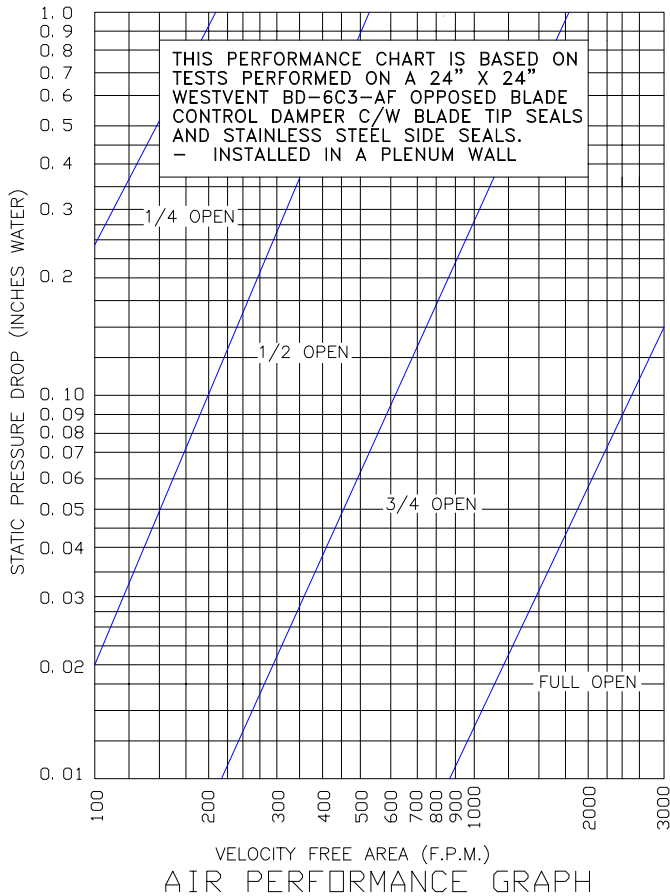
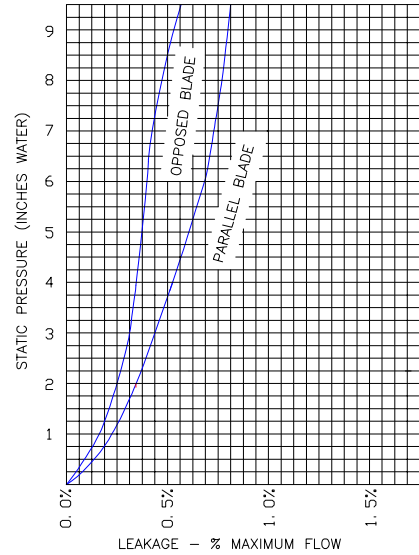
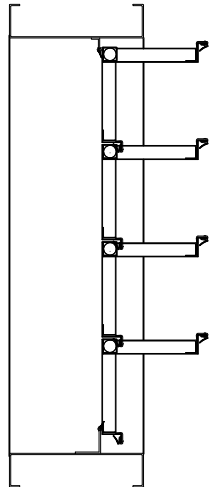
1. COUNTER BALANCE WEIGHTS **MUST NOT** BE REMOVED OR RELOCATED
2. BACKDRAFT DAMPER UNIT **MUST NOT** BE PLACED IN, OR TOO CLOSE TO WALL
3. THESE DAMPERS WILL NOT OPERATE EFFECTIVELY IF COUNTER BALANCE WEIGHTS ARE REMOVED
4. REMOVING COUNTER BALANCE WEIGHTS WILL VOID WARRANTY

DATE:
PROJECT:
ENGINEER:
CUSTOMER:
DISTRIBUTOR:

BDS-8C6-AF



INDUSTRIAL STEEL BACK DRAFT DAMPER BDS-8C6-AF



THE INFORMATION CONTAINED ON THIS DATA SHEET REMAINS THE PROPERTY OF WESTERN VENTILATION PRODUCTS LTD. AND IS PROTECTED BY COPYRIGHT. WESTVENT AIR PERFORMANCE RATINGS SHOWN ARE BASED ON TESTS MADE BY TECHNICIANS IN OUR TEST LABORATORY.