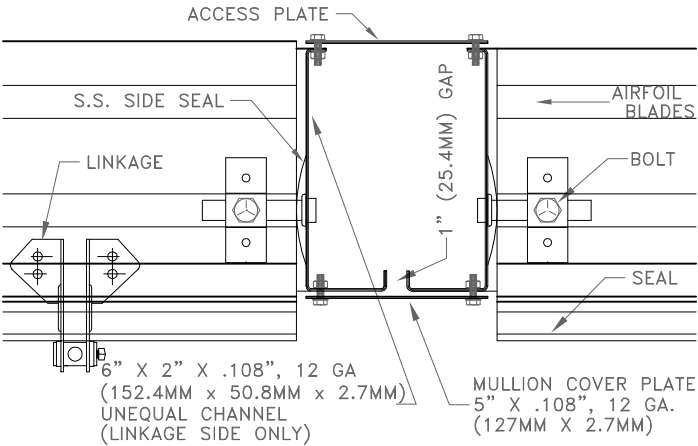
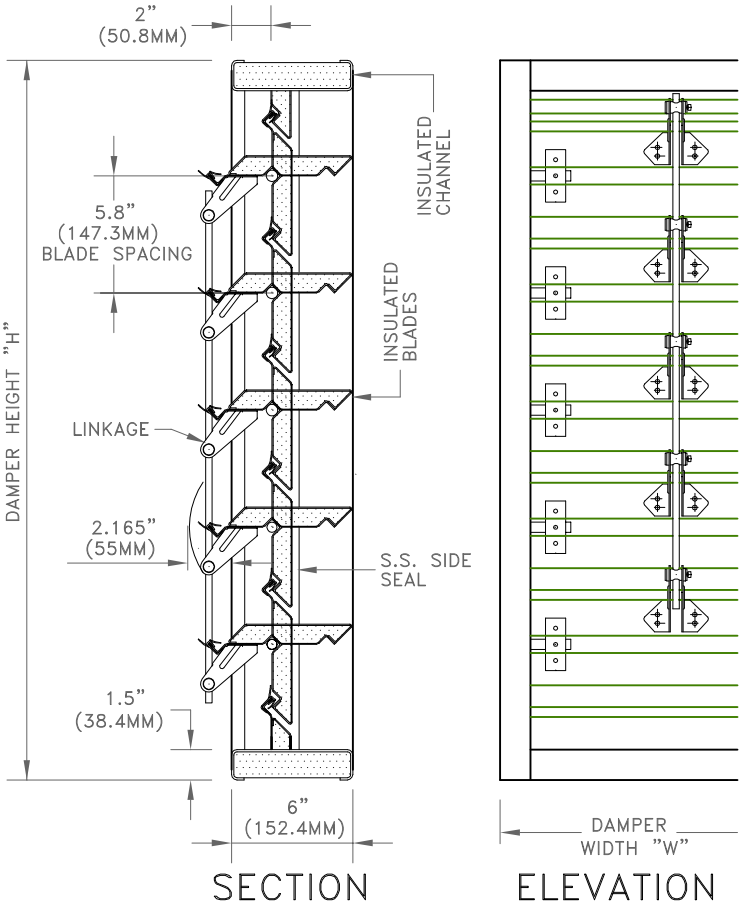




# COMMERCIAL STEEL INSULATED DAMPER INS-6C6-LI



MULTIPLE SECTION DETAIL  
(2:1 FROM DRAWING BELOW)



STANDARD SPECIFICATIONS

- CONST. - FORMED GALVANIZED STEEL. WELDS COATED WITH ZINC RICH PAINT
- FRAME - 12 GA. GALV. INSULATED STEEL CHANNEL, BUTT CORNERS
- BLADES - 6" X 1.16" (152.4MM X 29.5MM), 1 PIECE 16 GAUGE STEEL ON INTERIOR SIDE AND 1 PIECE 24 GAUGE GALVANIZED ON EXTERIOR, C/W RIGID FOAM OR FIBREGLASS INSULATION
- SEALS - DUAL DUROMETER VINYL BLADE SEAL, -40° F. TO +200° F., 2.7" (68.6MM) STAINLESS STEEL SIDE SEALS
- SHAFTS - .5" (12.7MM) DIA. C.R. PLATED STEEL
- BEARINGS - .5" (12.7MM) OILITE BRONZE BUSHINGS
- LINKAGE - INSIDE AIRSTREAM, ROD TRAVEL 5.25" (133.4MM)
- FINISH - MILL GALVANIZED STEEL
- SIZE - MAXIMUM 48" X 72" (1219.2MM X 1828.8MM)
- CONTROL - MANUAL, JACK SHAFTS, MOTORIZED, ETC.

OPTIONS

- FRAME - HEAVIER GAUGE MATERIAL
- BLADES - HEAVIER GAUGE MATERIAL
- BEARINGS - .5" (12.7MM) NYLON BUSHINGS  
.5" (12.7MM) BALL BEARINGS
- JACK SHAFTS - SEE SIZING CHARTS
- FINISH - PRIME COAT, BAKED ENAMEL

TECHNICAL NOTES

- MAX. RECOMMENDED VEL. - 3000 FPM
- LEAKAGE - SEE PERFORMANCE CHART
- SHIPPING WEIGHT - APPROX. 12 LB/SQ. FT.
- LARGER SIZES - MULTIPLE SECTIONS WILL BE PROVIDED FOR RE-ASSEMBLY BY OTHERS

DAMPER IS MANUFACTURED .25" (6MM) SMALLER THAN ORDERED SIZE UNLESS EXACT DIMENSIONS ARE STATED

\* FOR MORE INFORMATION, CONTACT OUR FACTORY \*

NOTES

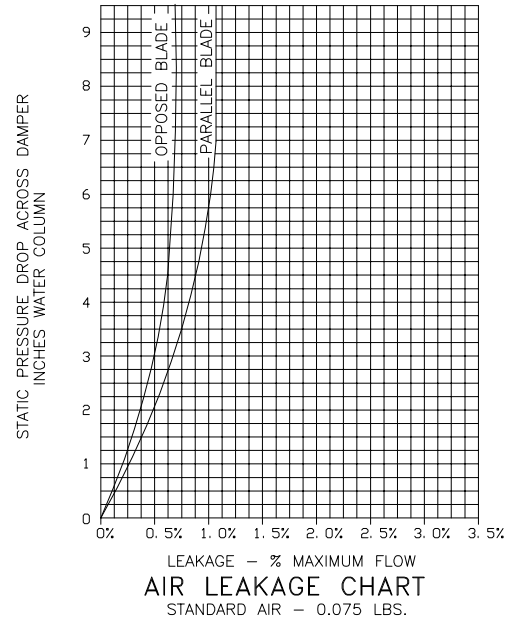
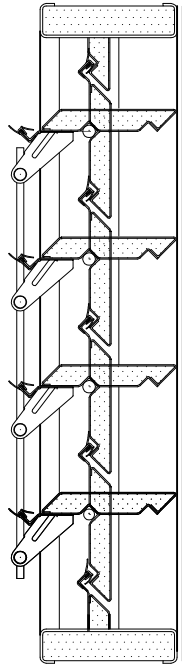
APPROVAL

DATE:  
PROJECT:  
ENGINEER:  
CUSTOMER:  
DISTRIBUTOR:

IT-939-SNI



# COMMERCIAL STEEL INSULATED DAMPER INS-6C6-LI & LS

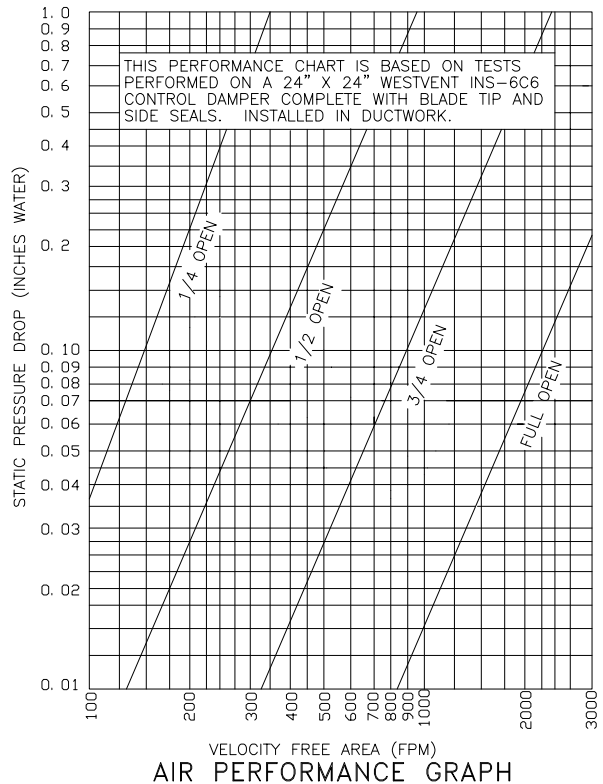
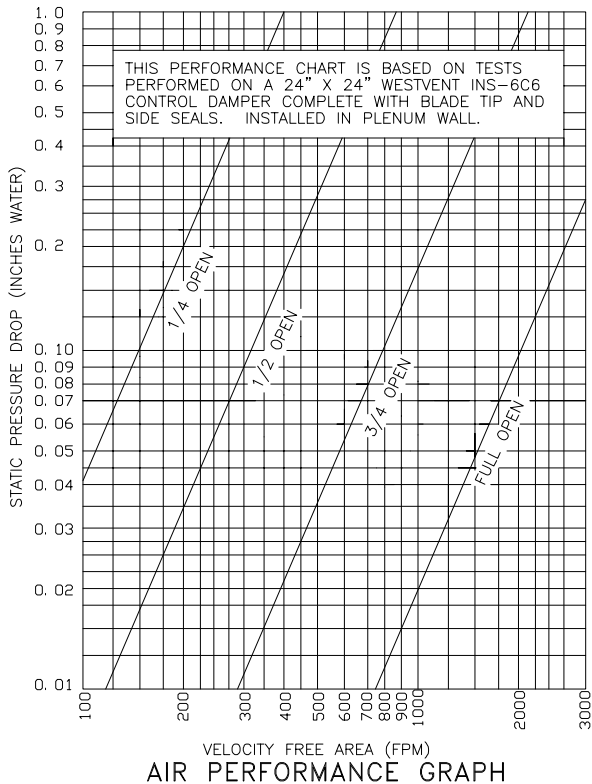


### TORQUE REQUIREMENT CHART: INCH - LBS./SQ. FT.

| 1000 F.P.M.<br>@ 2" W.G.             | 1000 - 2000 F.P.M.<br>@ 3" W.G. (X 1.5) | 2000 - 3000 F.P.M.<br>@ 4" W.G. (X 2.0) |
|--------------------------------------|---|---|
| OPPOSED BLADE<br>5 IN. LBS./SQ. FT.  | OPPOSED BLADE<br>7.5 IN. LBS./SQ. FT.   | OPPOSED BLADE<br>10 IN. LBS./SQ. FT.    |
| PARALLEL BLADE<br>7 IN. LBS./SQ. FT. | PARALLEL BLADE<br>10.5 IN. LBS./SQ. FT. | PARALLEL BLADE<br>14 IN. LBS./SQ. FT.   |

### MAXIMUM SYSTEM PRESSURE

| 12" WIDE<br>10" SP W.G. | 24" WIDE<br>9" SP W.G. | 36" WIDE<br>8" SP W.G. | 48" WIDE<br>6" SP W.G. |
|-------------------------|------------------------|------------------------|------------------------|
|-------------------------|------------------------|------------------------|------------------------|



THE INFORMATION CONTAINED ON THIS DATA SHEET REMAINS THE PROPERTY OF WESTERN VENTILATION PRODUCTS LTD. AND IS PROTECTED BY COPYRIGHT. WESTVENT AIR PERFORMANCE RATINGS SHOWN ARE BASED ON TESTS MADE BY TECHNICIANS IN OUR TEST LABORATORY.