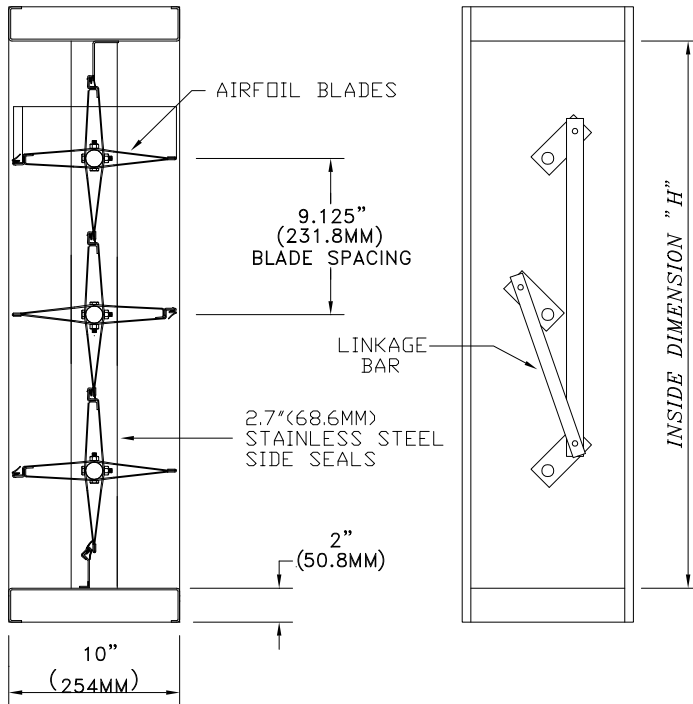
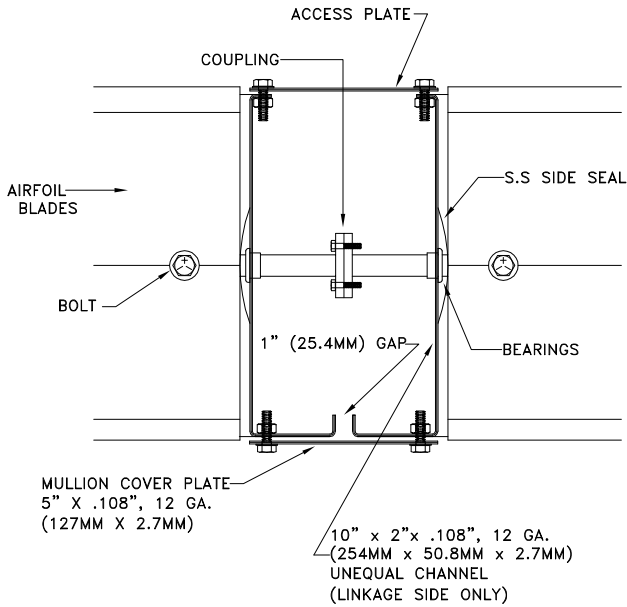


MULTIPLE SECTION
1: 2 FROM DRAWING BELOW



SECTION

SIDE VIEW



INDUSTRIAL LOW LEAKAGE DAMPER AFS-10C10

STANDARD SPECIFICATIONS

- CONST. - FORMED GALVANIZED STEEL. WELDS COATED WITH ZINC RICH PAINT
- FRAME - 10" X 2" X .108" 12 GA. (254MM X 50.8MM X 2.8MM) GALVANIZED STEEL CHANNEL
- BLADES - 9.5" X 1" X .064", 16 GA. (241.3MM X 12.7MM X 1.61MM) GALVANIZED AIRFOIL, 2 PIECES
- SEALS - DUAL DUROMETER VINYL BLADE SEAL, -40 DEG. F. TO +200 DEG. F., S.S. SIDE SEALS
- SHAFTS - 1" (25.4MM) DIA. CONTINUOUS C.R. PLATED STEEL
- BEARINGS - 1" (25.4MM) PRESSED IN BALL BEARINGS
- LINKAGE - OUTSIDE AIRSTREAM, 2.0" X .25" (38.1MM X 6.4MM) PLATED STEEL LINKAGE
- DRIVE SHAFT - 1" (25.4MM) DIA. CONTINUOUS C.R. PLATED STEEL
- FINISH - MILL GALVANIZED STEEL
- SIZE - MINIMUM 12" W X 14" H (304.8MM X 355.6MM)
- MAXIMUM 48" W X 96" H (1219.2MM X 2438.4MM)

TECHNICAL NOTES

- MAX. RECOMMENDED VEL. - 6000 FPM
- SHIPPING WEIGHT - APPROX. 14 LB/SQ. FT.
- LARGER SIZES - MULTIPLE SECTIONS WILL BE PROVIDED FOR RE-ASSEMBLY BY OTHERS

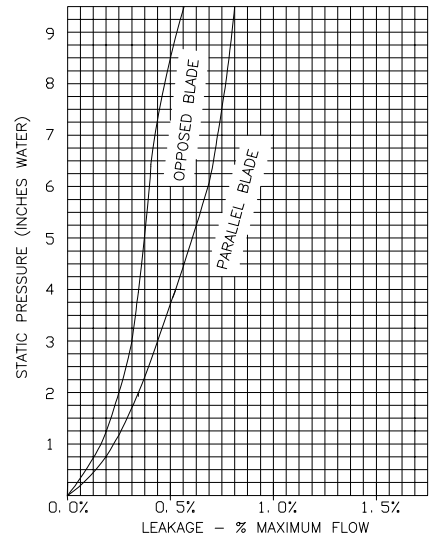
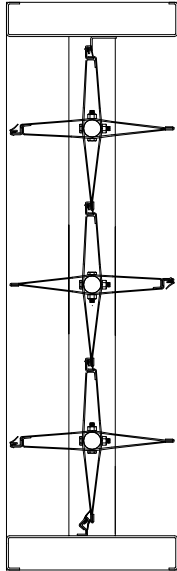
NOTES

APPROVAL

DATE:
PROJECT:
ENGINEER:
CUSTOMER:
DISTRIBUTOR:

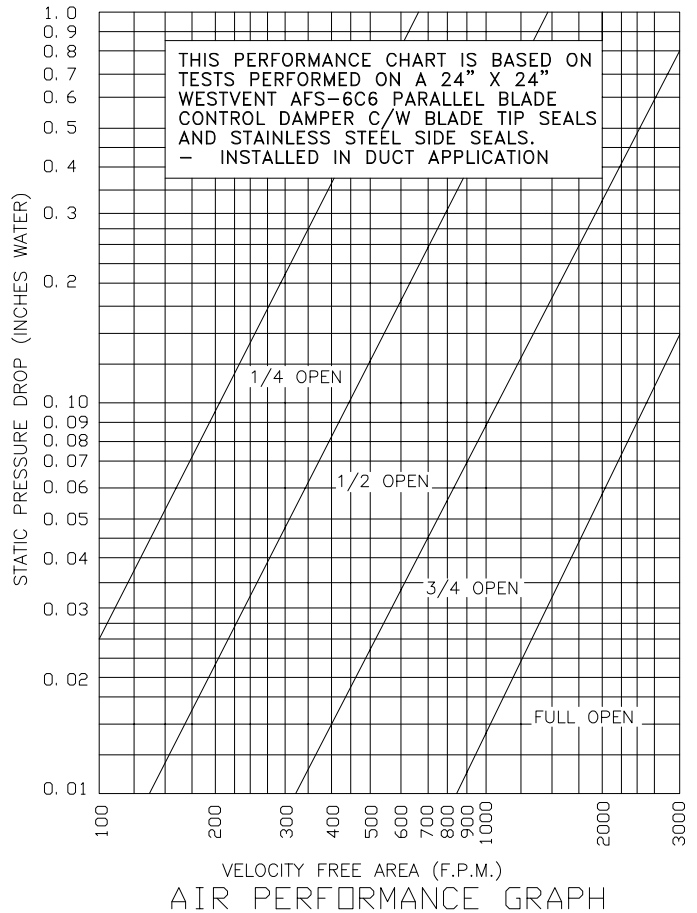
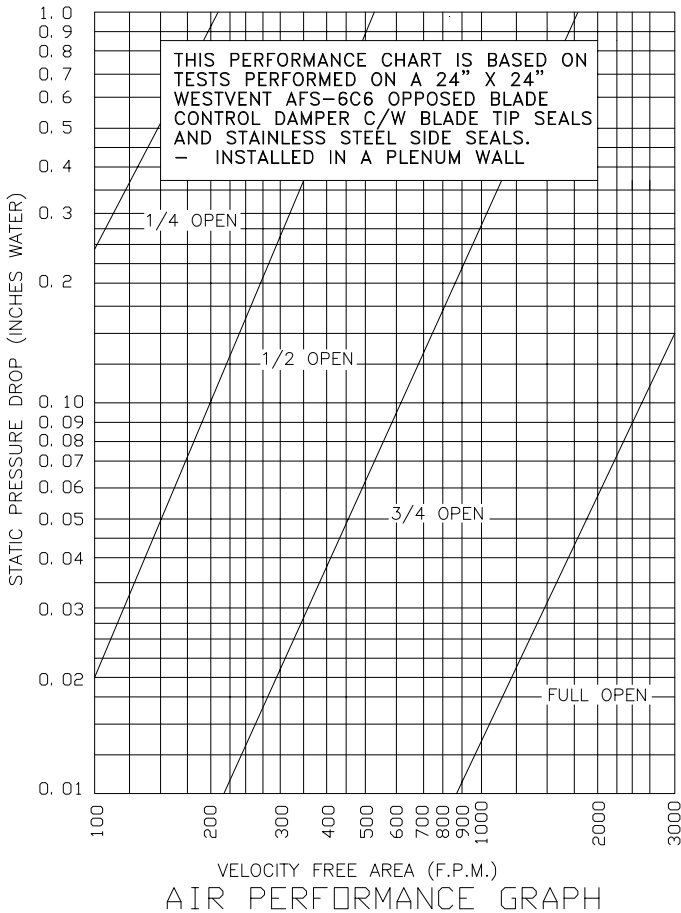


INDUSTRIAL LOW LEAKAGE DAMPER AFS-10C10



TORQUE REQUIREMENT CHART: INCH - LBS./SQ. FT.			
1000 F.P.M. @ 2" W.G.	1000 - 2000 F.P.M. @ 3" W.G. (X 1.5)	2000 - 3000 F.P.M. @ 4" W.G. (X 2.0)	
OPPOSED BLADE 5 IN. LBS./SQ. FT.	OPPOSED BLADE 7.5 IN. LBS./SQ. FT.	OPPOSED BLADE 10 IN. LBS./SQ. FT.	
PARALLEL BLADE 7 IN. LBS./SQ. FT.	PARALLEL BLADE 10.5 IN. LBS./SQ. FT.	PARALLEL BLADE 14 IN. LBS./SQ. FT.	

MAXIMUM SYSTEM PRESSURE			
12" WIDE 10" SP W.G.	24" WIDE 8" SP W.G.	36" WIDE 8" SP W.G.	48" WIDE 8" SP W.G.



THE INFORMATION CONTAINED ON THIS DATA SHEET REMAINS THE PROPERTY OF WESTERN VENTILATION PRODUCTS LTD. AND IS PROTECTED BY COPYRIGHT. WESTVENT AIR PERFORMANCE RATINGS SHOWN ARE BASED ON TESTS MADE BY TECHNICIANS IN OUR TEST LABORATORY.