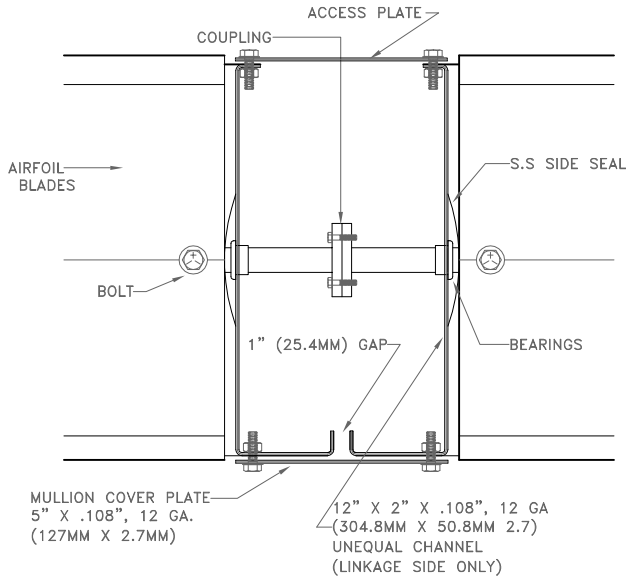


MULTIPLE SECTION  
1: 2 FROM DRAWING BELOW



# INDUSTRIAL LOW LEAKAGE DAMPER AFS-12C12

STANDARD SPECIFICATIONS

- CONST. - FORMED GALVANIZED STEEL. WELDS COATED WITH ZINC RICH PAINT
- FRAME - 12" X 2" X .108", 12 GA (304.8MM X 50.8MM X 2.75MM GALVANIZED STEEL CHANNEL
- BLADES - 11.5" X 1.5" X .064", 16 GA. (292.1MM X 38.1MM X 1.61MM GALVANIZED AIRFOIL, 2 PIECES
- SEALS - DUAL DUROMETER VINYL BLADE SEAL, -40 DEG. F. TO +200 DEG. F., S.S. SIDE SEALS
- SHAFTS - 1.5" (38.1MM) DIA. CONTINUOUS C.R. PLATED STEEL
- BEARINGS - 1.5" (38.1MM) PRESSED IN BALL BEARINGS
- LINKAGE - OUTSIDE AIRSTREAM, 2.5" X .25" (31.8MM X 6.4MM) PLATED STEEL LINKAGE
- DRIVE SHAFT - 1.5" (38.1MM) DIA. CONTINUOUS C.R. PLATED STEEL
- FINISH - MILL GALVANIZED STEEL
- SIZE - MINIMUM 12" W X 16" H (304.8MM X 406.4MM)  
- MAXIMUM 48" W X 96" H (1219.2MM X 2438.4MM)

OPTIONS

- BEARINGS - STAINLESS STEEL BUSHINGS, NYLON BUSHINGS, OILITE BUSHINGS, 2 BOLT FLANGE SELF ALIGNING
- JACK SHAFTS - SEE SIZING CHARTS
- CONTROL - MANUAL, JACK SHAFTS, MOTORIZED, ETC.

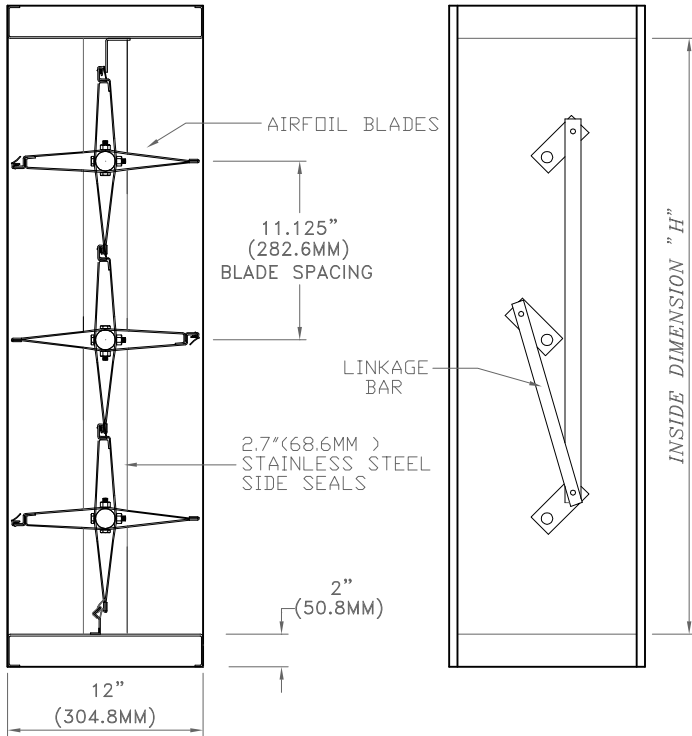
TECHNICAL NOTES

- MAX. RECOMMENDED VEL. - 6000 FPM
- SHIPPING WEIGHT - APPROX. 16 LB/SQ. FT.
- LARGER SIZES - MULTIPLE SECTIONS WILL BE PROVIDED FOR RE-ASSEMBLY BY OTHERS

DAMPER IS AVAILABLE IN OPPOSED AND PARALLEL BLADE ORIENTATION (OPPOSED BLADE IS SHOWN)

INDUSTRIAL DAMPERS ARE MANUFACTURED TO INSIDE DIMENSIONS UNLESS OTHERWISE STATED

\* FOR MORE INFORMATION, CONTACT OUR FACTORY \*



SECTION

SIDE VIEW

## NOTES

## APPROVAL

DATE:  
PROJECT:  
ENGINEER:  
CUSTOMER:  
DISTRIBUTOR:

AFS-12C12