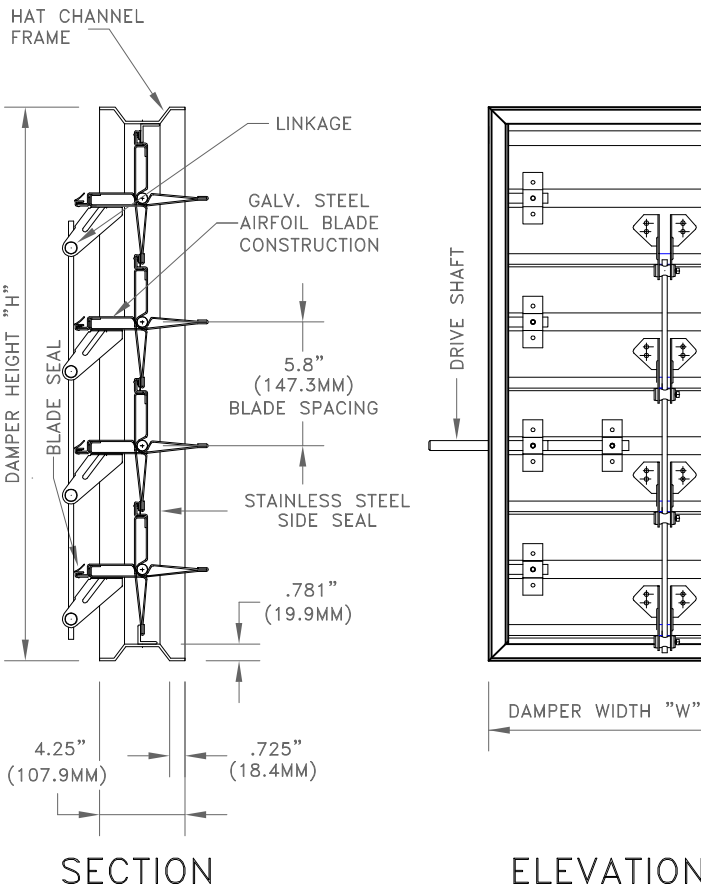


MULTIPLE SECTION DETAIL
(1.5 : 1 FROM DRAWING BELOW)



COMMERCIAL LOW LEAKAGE DAMPER AFS-4H6

STANDARD SPECIFICATIONS

- CONST. - WELDED FORMED STEEL FRAME, MITRED CORNERS. GUSSETS, MULLIONS AND SPREADER BARS ON ALL SECTIONS 48" (1219.2MM) AND LARGER
- FRAME - 4.25" X .781" (107.9MM X 19.9MM) X 12 GA. GALVANIZED STEEL HAT CHANNEL, WELDED
- BLADES - TWO PIECE AIRFOIL, PARALLEL BLADE, 6" (152.4MM) X 16 GA. GALVANIZED STEEL, 5.8" (147.3MM) BLADE SPACING
- SEALS - VINYL BLADE TIP, -40° F. TO +200° F. AND STAINLESS STEEL SIDE SEALS
- SHAFTS - 0.5" (12.7MM) DIA. C.R. PLATED STEEL
- BEARING - 0.5" (12.7MM) OILITE BRONZE BUSHINGS
- DRIVE SHAFT - 0.5" (12.7MM) DIA. X 10" (254MM) C.R. PLATED STEEL
- LINKAGE - IN AIRSTREAM, ROD TRAVEL 5.25" (133.4MM)
- FINISH - MILL GALVANIZED
- SIZE - MINIMUM 8" X 9" (203.2MM X 228.6MM)
MAXIMUM 48" X 72" (1219.2MM X 1828.8MM)

OPTIONS

- BEARING - 0.5" (12.7MM) NYLON BUSHINGS
- CONTROL - HAND QUADRANTS, ACTUATORS, JACK SHAFTS AND BRACKETS

TECHNICAL NOTES

- CAUTION - ADVISED ON TYPE OF APPLICATION
- MAX. RECOMENDED VEL. - 3000 FPM
- MAX. TEMPERATURE - 200 DEG. F
- LEAKAGE - LESS THAN 1% AT 6" W.G.
- SHIPPING WEIGHT - APPROX. 9 LB/SQ.FT.
- LARGER SIZES - MULTIPLE SECTIONS WILL BE PROVIDED FOR RE-ASSEMBLY BY OTHERS

DAMPER IS MANUFACTURED .25" (6.4MM) SMALLER THAN ORDERED SIZE UNLESS EXACT DIMENSIONS ARE STATED.

* FOR MORE INFORMATION, CONTACT OUR FACTORY *

NOTES

APPROVAL

DATE:
PROJECT:
ENGINEER:
CUSTOMER:
DISTRIBUTOR:

AFS-4H6