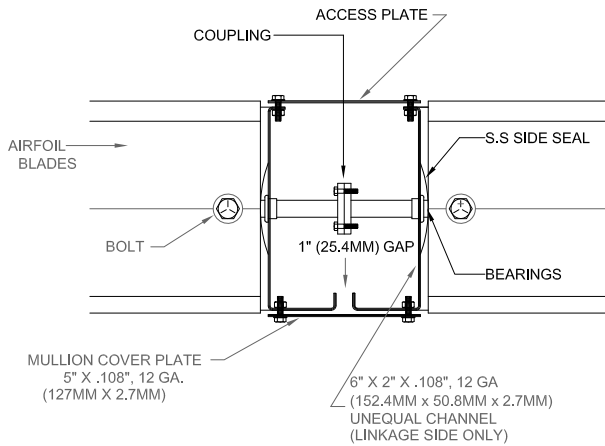


MULTIPLE SECTION
1: 2 FROM DRAWING BELOW



INDUSTRIAL STEEL LOW LEAKAGE DAMPER AFS-6C6



STANDARD SPECIFICATIONS

- CONST. - FORMED GALVANIZED STEEL. WELDS COATED WITH ZINC RICH PAINT
- FRAME - 6" X 2" X .108", 12 GA. (152.4MM X 50.8MM X 2.8MM) GALVANIZED STEEL CHANNEL
- BLADES - 6" X .064", 16 GA. (152.4MM X 1.6MM) GALVANIZED STEEL AIRFOIL, 2 PIECES
- SEALS - DUAL DUROMETER VINYL BLADE SEAL, -40 DEG. F. TO +200 DEG. F., S.S. SIDE SEALS
- SHAFTS - .5" (12.7MM) DIA. C.R. PLATED STEEL
- BEARINGS - .5" (12.7MM) DIA. PRESSED IN BALL BEARINGS
- LINKAGE - OUTSIDE AIRSTREAM, 1.5" X .25" (38.1MM X 6.4MM) PLATED STEEL LINKAGE
- DRIVE SHAFT FINISH SIZE - .5" (12.7MM) DIA. C.R. PLATED STEEL
- FINISH - MILL GALVANIZED STEEL
- SIZE - MINIMUM 8" W X 16" H (203.2MM X 406.4MM)
- MAXIMUM 48" W X 72" H (1219.2MM X 1828.8MM)

OPTIONS

- BEARINGS - STAINLESS STEEL BUSHINGS, NYLON BUSHINGS, OILITE BUSHINGS, 2 BOLT FLANGE SELF ALIGNING
- JACK SHAFTS - SEE SIZING CHARTS
- CONTROL - MANUAL, JACK SHAFTS, MOTORIZED, ETC.

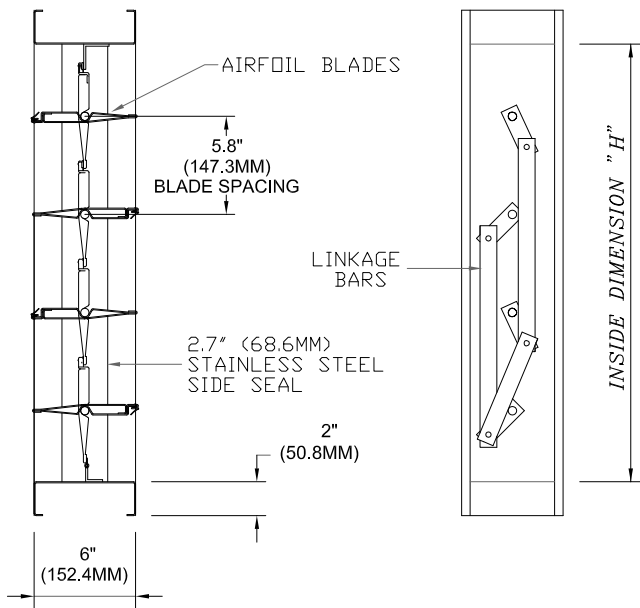
TECHNICAL NOTES

- MAX. RECOMMENDED VEL. - 3000 FPM
- MAXIMUM TEMPERATURE - 250 ° F.
- SHIPPING WEIGHT - APPROX. 9 LB/SQ. FT.
- LARGER SIZES - MULTIPLE SECTIONS WILL BE PROVIDED FOR RE-ASSEMBLY BY OTHERS

DAMPER IS AVAILABLE IN OPPOSED BLADE AND PARALLEL BLADE ORIENTATION (OPPOSED BLADE IS SHOWN)

INDUSTRIAL DAMPERS ARE MANUFACTURED TO INSIDE DIMENSIONS UNLESS OTHERWISE STATED

* FOR MORE INFORMATION, CONTACT OUR FACTORY *



SECTION

SIDE VIEW

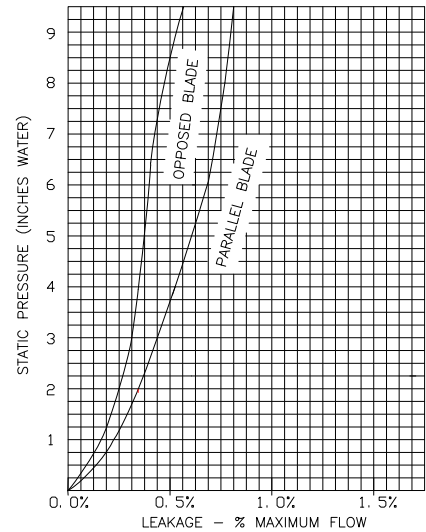
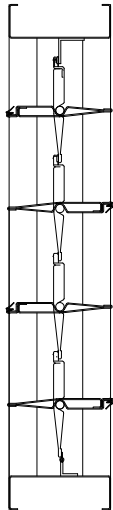
NOTES

APPROVAL

DATE:
PROJECT:
ENGINEER:
CUSTOMER:
DISTRIBUTOR:

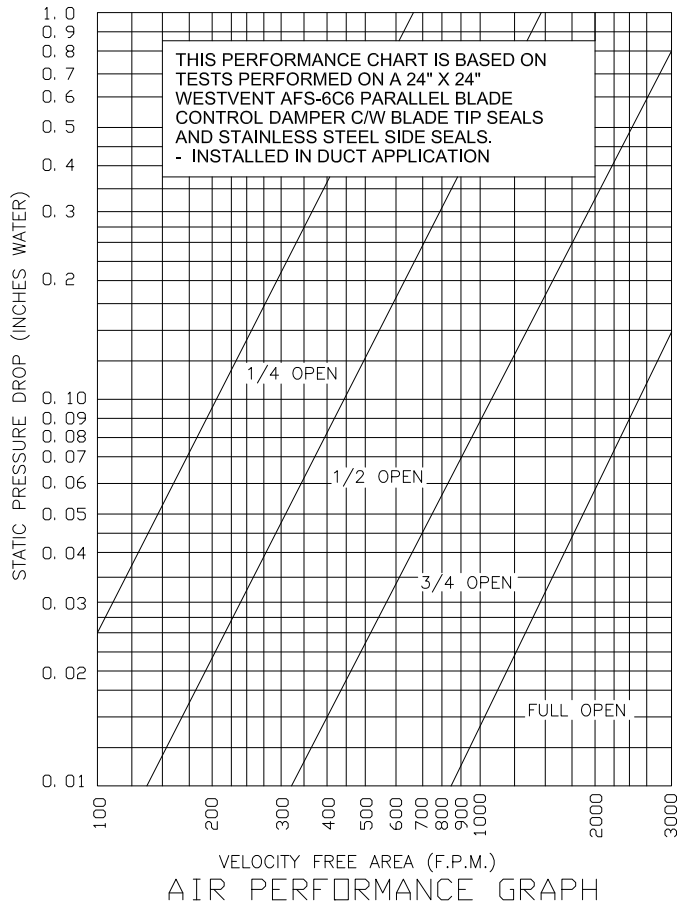
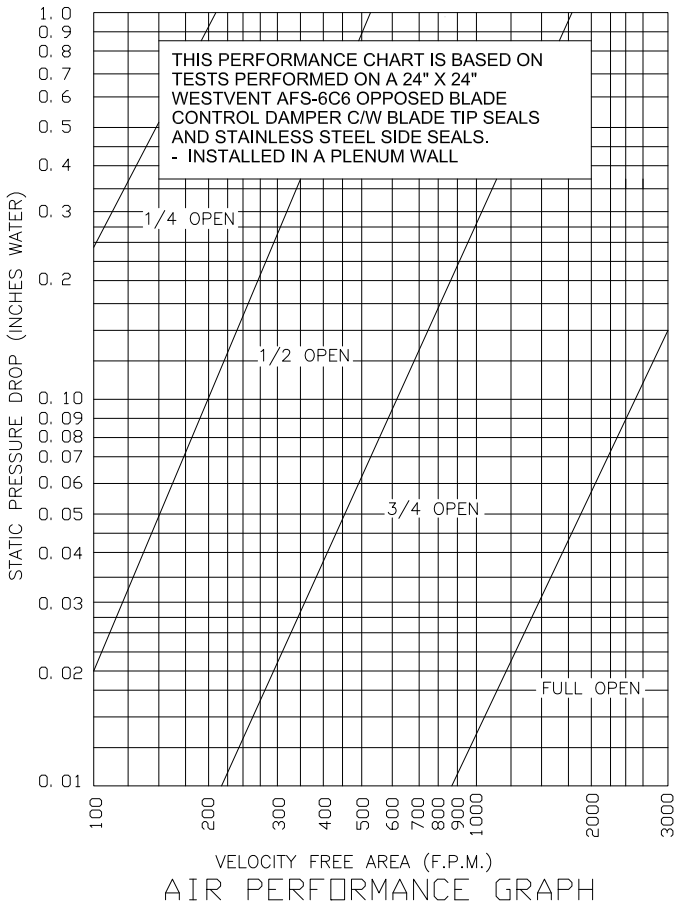


INDUSTRIAL STEEL LOW LEAKAGE DAMPER AFS-6C6



TORQUE REQUIREMENT CHART: INCH - LBS./SQ. FT.		
1000 F.P.M. @ 2" W.G.	1000 - 2000 F.P.M. @ 3" W.G. (X 1.5)	2000 - 3000 F.P.M. @ 4" W.G. (X 2.0)
OPPOSED BLADE 5 IN. LBS./SQ. FT.	OPPOSED BLADE 7.5 IN. LBS./SQ. FT.	OPPOSED BLADE 10 IN. LBS./SQ. FT.
PARALLEL BLADE 7 IN. LBS./SQ. FT.	PARALLEL BLADE 10.5 IN. LBS./SQ. FT.	PARALLEL BLADE 14 IN. LBS./SQ. FT.

MAXIMUM SYSTEM PRESSURE			
12" WIDE 6" SP W.G.	24" WIDE 6" SP W.G.	36" WIDE 5" SP W.G.	48" WIDE 4" SP W.G.



THE INFORMATION CONTAINED ON THIS DATA SHEET REMAINS THE PROPERTY OF WESTERN VENTILATION PRODUCTS LTD. AND IS PROTECTED BY COPYRIGHT. WESTVENT AIR PERFORMANCE RATINGS SHOWN ARE BASED ON TESTS MADE BY TECHNICIANS IN OUR TEST LABORATORY.