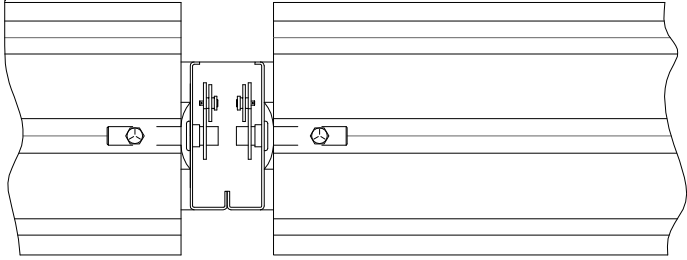




**COMMERCIAL STAINLESS  
PARALLEL BLADE DAMPER  
PBSS-4C6**



**MULTIPLE SECTION DETAIL  
(2:1 FROM DRAWING BELOW)**

STANDARD SPECIFICATIONS

- CONST. - FORMED 316 STAINLESS STEEL. WELDS PICKLED
- FRAME - 4" X 1" X .5" (101.6MM X 25.4MM X 12.7MM)  
16 GA. 316 STAINLESS STEEL CHANNEL
- BLADES - 6" X .064", 16 GA. (152.4MM X 1.61MM)  
FORMED 316 S.S. 5.8" (147.3MM) BLADE  
SPACING
- SEALS - DUAL DUROMETER VINYL BLADE SEAL, -40°F.  
TO +200° F., 301 S.S. SIDE SEALS
- SHAFTS - .5" (12.7MM) DIA. 316 STAINLESS STEEL
- BEARINGS - .5" (12.7MM) NYLON BUSHINGS
- LINKAGE - WELDED, BOLTED, IN SIDE CHANNEL
- DRIVE SHAFT - .5" (12.7MM) DIA. 316 STAINLESS STEEL  
EXTENDING 6" (154.4MM) OUT OF FRAME
- FINISH - MILL STAINLESS STEEL
- SIZE - MINIMUM 8" W X 8" H (203.2MM X 203.2MM)  
- MAXIMUM 48" W X 72" H (1219.2MM X 1828.8MM)

OPTIONS

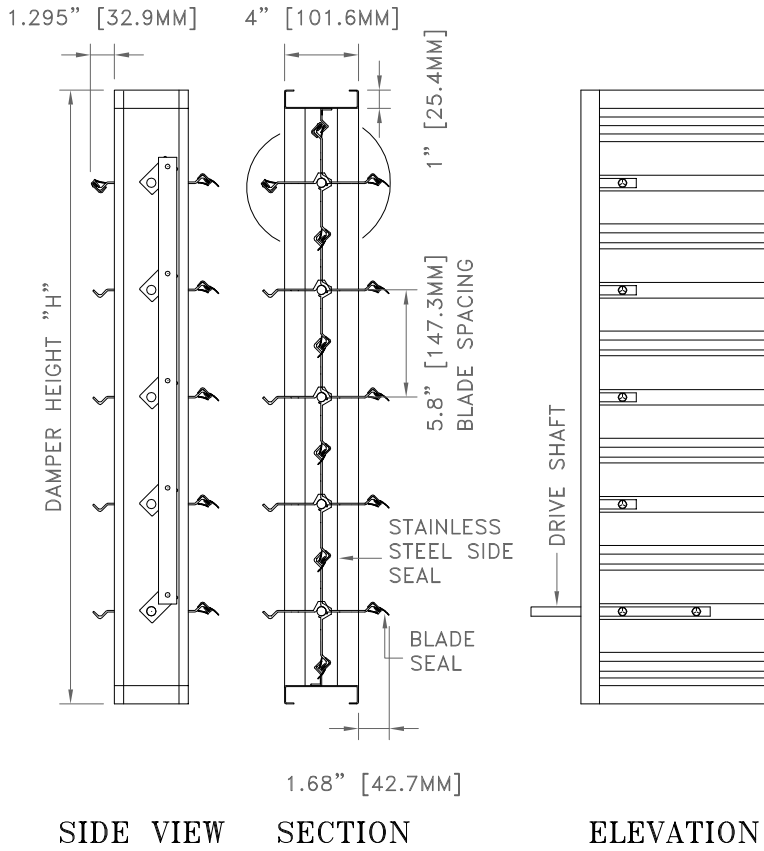
- BEARINGS - .5" (12.7MM) BALL BEARING
- JACK SHAFTS - SEE SIZING CHARTS
- CONTROL - MANUAL, JACK SHAFTS, MOTORIZED, ETC.

TECHNICAL NOTES

- CAUTION - ADVISED ON TYPE OF APPLICATION
- MAX. RECOMMENDED VEL. - 2000 FPM
- MAXIMUM TEMPERATURE - 200° F.
- LEAKAGE - LESS THAN .5% AT 4" W.G.
- SHIPPING WEIGHT - APPROX. 6 LB/SQ. FT.
- LARGER SIZES - MULTIPLE SECTIONS WILL BE PROVIDED FOR RE-ASSEMBLY BY OTHERS

DAMPER IS MANUFACTURED .25" (6MM) SMALLER THAN ORDERED SIZE UNLESS EXACT DIMENSIONS ARE STATED

\* FOR MORE INFORMATION, CONTACT OUR FACTORY \*

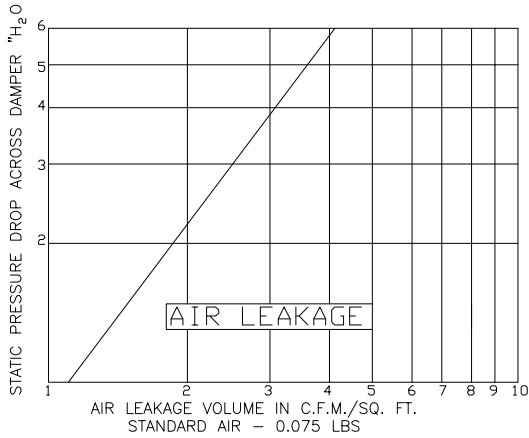


NOTES	APPROVAL
<p>DATE: PROJECT: ENGINEER: CUSTOMER: DISTRIBUTOR:</p>	<div style="border: 1px solid black; height: 100%; width: 100%;"></div>

PBS-4C6-D



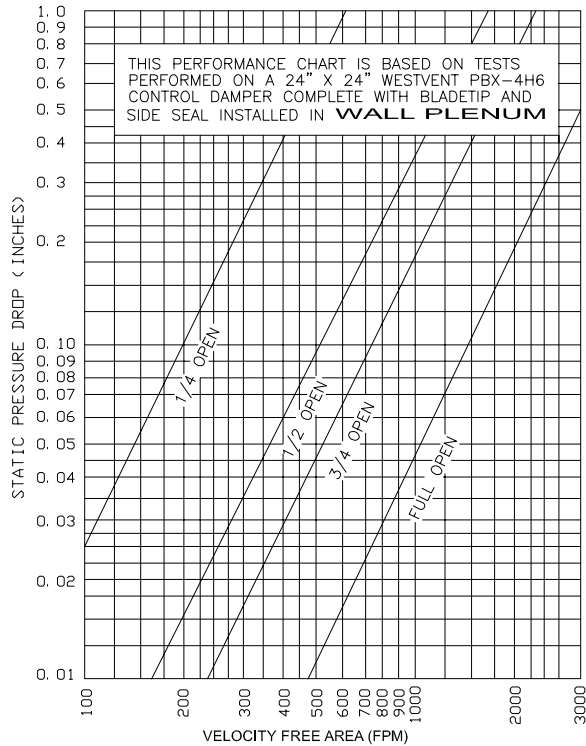
## COMMERCIAL STAINLESS PARALLEL BLADE DAMPER PBSS-4C6



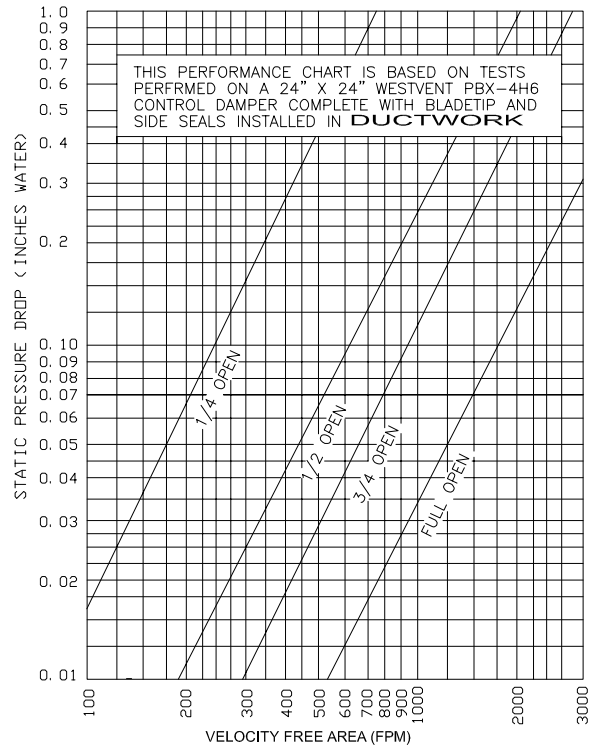
TORQUE REQUIREMENT CHART: INCH - LBS./SQ. FT.		
1000 F.P.M. @ 2" W.G.	1000 - 2000 F.P.M. @ 3" W.G. (X 1.5)	1000 - 2000 F.P.M. @ 4" W.G. (X 2.0)
7 IN. LBS./SQ. FT.	10.5 IN. LBS./SQ. FT	14 IN. LBS./SQ. FT

MAXIMUM SYSTEM PRESSURE			
12" WIDE 4" SP W.G.	24" WIDE 4" SP W.G.	36" WIDE 3" SP W.G.	48" WIDE 2.5" SP W.G.

### AIR PERFORMANCE



### AIR PERFORMANCE



THE INFORMATION CONTAINED ON THIS DATA SHEET REMAINS THE PROPERTY OF WESTERN VENTILATION PRODUCTS LTD. AND IS PROTECTED BY COPYRIGHT. WESTVENT AIR PERFORMANCE RATINGS SHOWN ARE BASED ON TESTS MADE BY TECHNICIANS IN OUR TEST LABORATORY.

"WESTVENT" RESERVES THE RIGHT TO MAKE CHANGES TO IMPROVE OUR PRODUCTS WITHOUT NOTICE. NOVEMBER 15, 2005