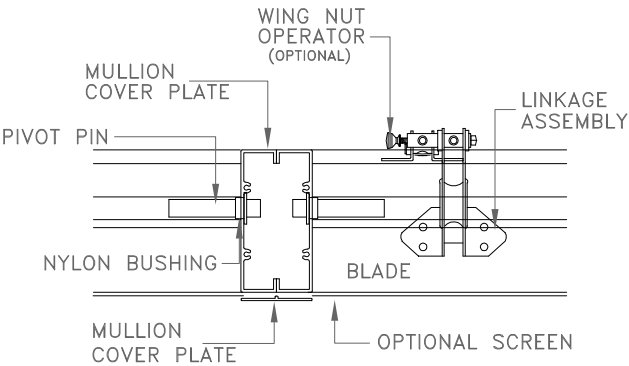
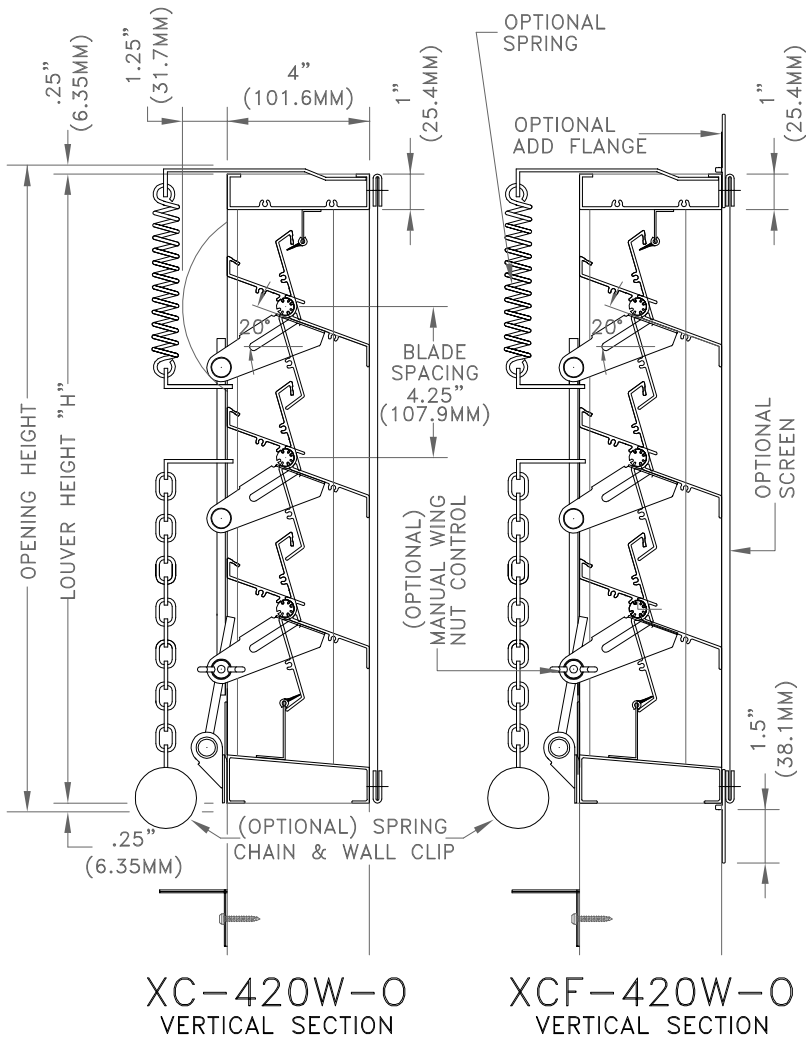




OPERABLE
ALUMINUM LOUVER
XC-420W-0 XCF-420W-0



HORIZONTAL SECTION



STANDARD SPECIFICATIONS

- CONST. - EXTRUDED ALUMINUM, BUTT CORNERS, MULLIONS
- FRAME - 4" X 1" X .081" (101.6MM X 25.4MM X 2.1MM) CHANNEL, UP TO 48" (1219.2MM) & 4" X 1.5" X .081" (101.6MM X 38.1MM X 2.1MM) OVER 48" (1219.2MM) 5° SLOPED SILL, BUTT CORNERS
- BLADES - 4" X .081" (101.6MM 2.1MM), 4.25" (107.95MM) SPACING OPEN TO 20°, EXTRA WEATHERLIP AT CENTER
- SEALS - DUAL DUROMETER VINYL BLADE TIP & 2.7" (68.6MM) STAINLESS STEEL SIDE SEALS
- SHAFTS - .5" (12.7MM) DIA. KEYED EXTR. ALUM.
- BEARINGS - .5" (12.7MM) NYLON BUSHINGS
- LINKAGE - IN AIRSTREAM ON INSIDE FACE, ROD TRAVEL 1.9" (48.3MM)
- FINISH - MILL ALUMINUM
- SIZE - MINIMUM 12" W X 12" H (304.8MM X 304.8MM)
MAXIMUM 32" W X 60" H (812.8MM X 1524MM)

OPTIONS

- FRAME - XCF-ADD FLANGE FRAME 1.5" (38.1MM) USING A 2.5" X .081" (63.5MM X 32.1MM) FLAT BAR
- BEARINGS - OILITE BRONZE BUSHINGS
- SCREEN - IN FRAME, SCREWED ON OUTSIDE FACE
- FINISH - BAKED ENAMEL, ANODIZED, & OTHERS
- CONTROL - MAN. WING NUT, MAN. WINDOW CRANK, SPRING AND CHAIN, JACK SHAFT AND BRACKETS, MOTORIZED

TECHNICAL NOTES

- MAX. REC. INTAKE VEL. - 500 FPM THROUGH FREE AREA
- SHIPPING WEIGHT - APPROX. 6 LBS./SQ. FT.
- LOUVERS ARE MANUFACTURED .5" (12.7MM) SMALLER THAN ORDERED UNLESS EXACT DIMENSIONS ARE STATED

* FOR MORE INFORMATION, CONTACT OUR FACTORY *

NOTES

APPROVAL

DATE:
PROJECT:
ENGINEER:
CUSTOMER:
DISTRIBUTOR:

XC-420W-0