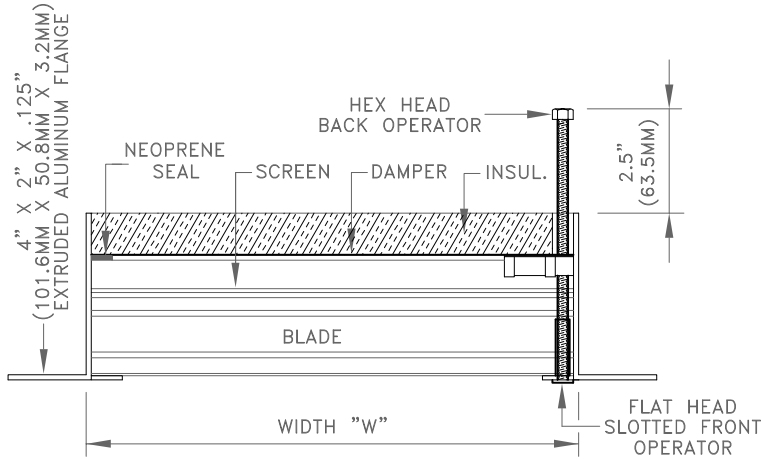
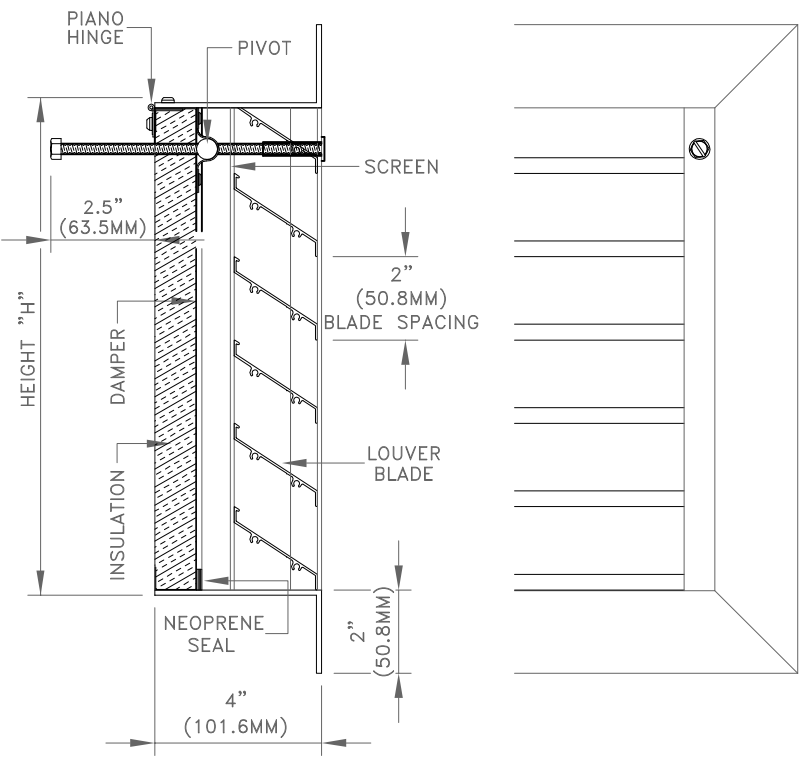




CRAWL SPACE VENT XF-430 ID



HORIZONTAL SECTION



VERTICAL SECTION

ELEVATION

STANDARD SPECIFICATIONS

- CONST. - EXTRUDED ALUMINUM, WELDED FRAME, MITERED CORNERS
- FRAME - 4" X 2" X .125", (101.6MM X 50.8MM X 3.2MM) EXTRUDED ALUMINUM FLANGE
- BLADES - 2" X .05" (50.8MM X 1.3MM) SET AT 30°, 2" (50.8MM) BLADE SPACING
- DAMPER - PANEL TYPE C/W 1" (25.4MM) RIGID INSUL. INTERIOR AND EXTERIOR KEY OPERATOR
- SEALS - .5" X .125" (12.7MM X 3.2MM) CLOSED CELL NEOPRENE SEAL
- SCREEN - #8 GALVANIZED INSECT SCREEN
- FINISH - MILL ALUMINUM
- SIZE - MINIMUM 8" W X 8" H (203.2MM X 203.2MM) MAXIMUM 24" X 12" (609.6MM X 304.8MM)

OPTIONS

- FINISH - BAKED ENAMEL, ANODIZED AND OTHERS

TECHNICAL NOTES

- MAX. REC. INTAKE VEL. - 700 FPM THROUGH FREE AREA
- SHIPPING WEIGHT - APPROX. 10 LBS./SQ. FT.

LOUVERS ARE MANUFACTURED .5" (12.7MM) SMALLER THAN ORDERED SIZE UNLESS EXACT DIMENSIONS ARE STATED

* FOR MORE INFORMATION, CONTACT OUR FACTORY *

<h2 style="margin: 0;">NOTES</h2>	<h2 style="margin: 0;">APPROVAL</h2>
<p>DATE: PROJECT: ENGINEER: CUSTOMER: DISTRIBUTOR:</p>	

XC-430-ID