

HORIZONTAL SECTION

SECURITY
STEEL LOUVER
ST-645SU STF-645SU

STANDARD SPECIFICATIONS

- CONST. - FORMED GALVANIZED STEEL, WELDED ASSEMBLY
- FRAME - 6" X 1" X 16 GAUGE (152.4MM X 25.4MM X 1.6MM) CHANNEL, SIDE DRAIN CHANNELS, 5° SLOPED SILL BUTT, CORNERS
- BLADES - 6" X 16 GAUGE (152.4MM X 1.6MM), SET AT 45°, 4" (101.6MM) SPACING, TYPE "U" CARRIES WATER TO SIDE DRAIN CHANNELS, .25" X 2" (6.4MM X 50.8MM) H.R. VERTICAL FLAT BAR AT 24" (609.6MM) CENTERS, FULL LOUVER HEIGHT
- SCREEN - .75" X .75" (19.1MM X 19.1MM) X 18 GA. GALVANIZED, SCREW FASTENED
- FINISH - MILL GALVANIZED
- SIZE - MINIMUM 12" W X 16" H (304.8MM X 406.4MM)
MAXIMUM SECTION WIDTH 72" (1828.8MM)
MAXIMUM SECTION HEIGHT 96" (2438.4MM)
MAXIMUM SECTION SIZE 48 SQ. FT.

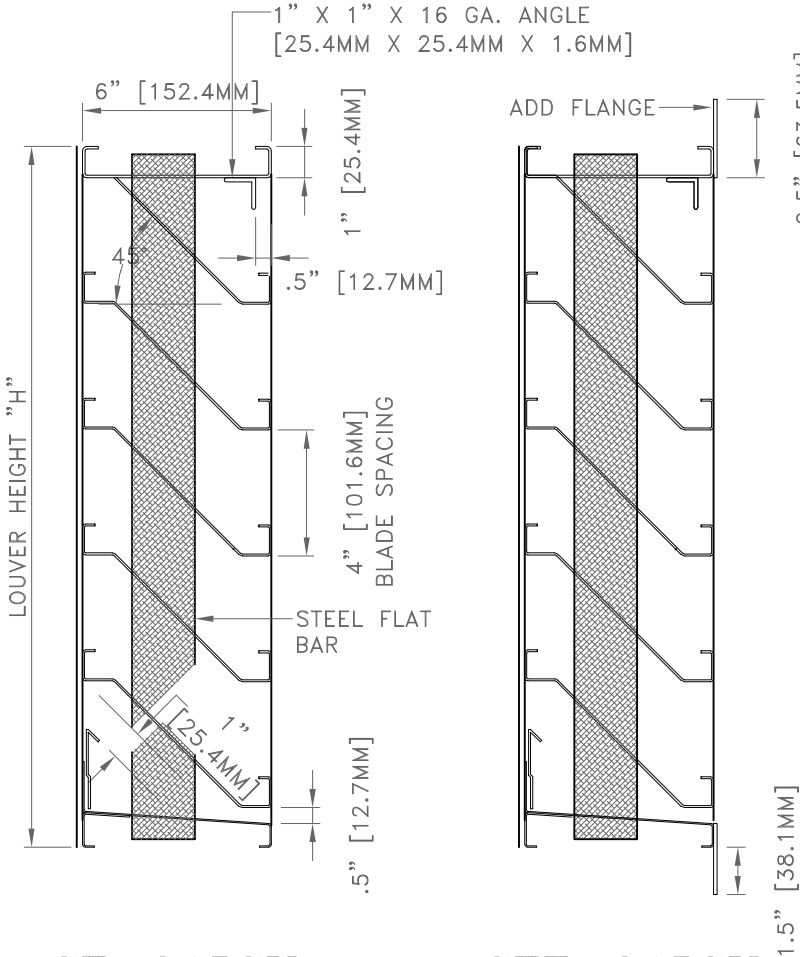
OPTIONS

- FRAME - STF - ADD FLANGE FRAME 1.5" (38.1MM) USING A 2.5" X 12 GAUGE (63.5MM X 2.8MM) FLAT BAR
- SCREEN - AS PER REQUEST
- FINISH - MINIMUM PRIME COAT OR BAKED ENAMEL IS RECOMMENDED

TECHNICAL NOTES

- CORROSION RESISTANCE IS LOST UPON WELDING, SEE OPTIONAL FINISHES
- MAX. REC. INTAKE VEL. - 900 FPM THROUGH FREE AREA
- SHIPPING WEIGHT - APPROX. 12 LBS./SQ. FT.
- LOUVERS ARE MANUFACTURED .5" (12.7MM) SMALLER THAN ORDERED SIZE UNLESS EXACT DIMENSIONS ARE STATED

* FOR MORE INFORMATION, CONTACT OUR FACTORY *



ST-645SU
VERTICAL SECTION

STF-645SU
VERTICAL SECTION

NOTES

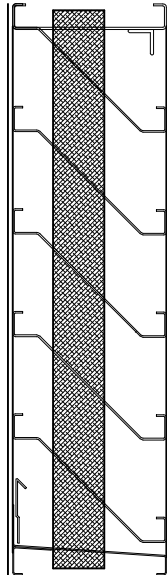
APPROVAL

DATE:
PROJECT:
ENGINEER:
CUSTOMER:
DISTRIBUTOR:

ST-645SU



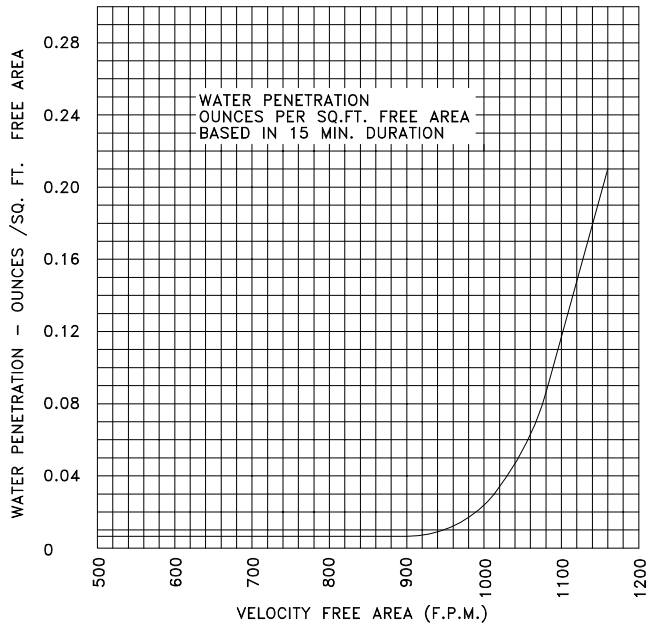
SECURITY STEEL LOUVER ST-645SU



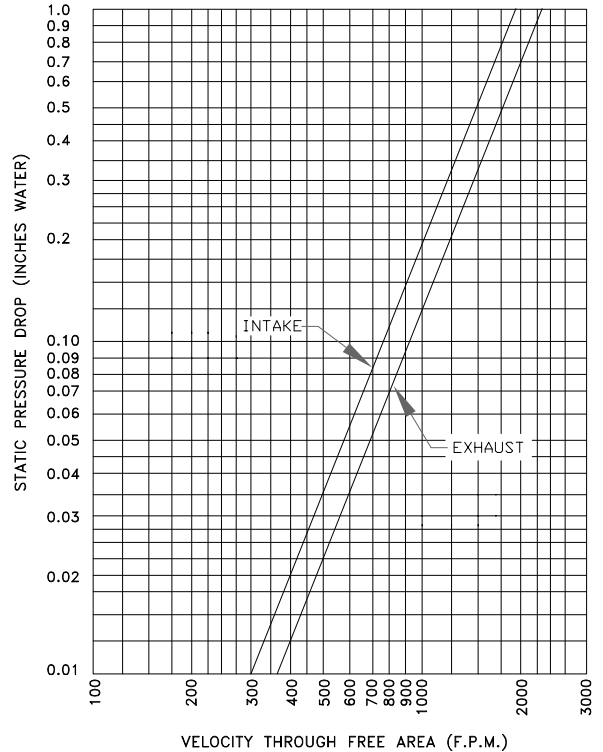
TEST
CONDITIONS:
A 48" X 48"
LOUVER WAS
USED FOR
THE TEST
AT STANDARD
AND
OPERATING
TEMPERATURE
RANGE OF
65°F - 85°F,
AND
15 MINUTES
TEST DURATION
WATER PENETRATION

		WIDTH (INCHES)										
		12	18	24	30	36	42	48	54	60	66	72
16	HEIGHT (INCHES)	0.56	0.94	1.31	1.69	2.06	3.02	2.81	3.19	3.56	3.94	4.31
20	HEIGHT (INCHES)	0.74	1.23	1.72	2.21	2.71	3.79	3.69	4.18	4.68	5.17	5.66
24	HEIGHT (INCHES)	0.92	1.52	2.13	2.74	3.35	4.55	4.57	5.18	5.79	6.40	7.01
28	HEIGHT (INCHES)	1.09	1.82	2.55	3.27	4.00	5.31	5.45	6.18	6.90	7.63	8.36
32	HEIGHT (INCHES)	1.27	2.11	2.96	3.80	4.64	6.07	6.33	7.18	8.02	8.86	9.71
36	HEIGHT (INCHES)	1.45	2.41	3.37	4.33	5.29	6.84	7.21	8.17	9.13	10.09	11.06
40	HEIGHT (INCHES)	1.62	2.70	3.78	4.86	5.94	7.60	8.09	9.17	10.25	11.33	12.40
44	HEIGHT (INCHES)	1.80	3.00	4.19	5.39	6.58	8.36	8.97	10.17	11.36	12.56	13.75
48	HEIGHT (INCHES)	1.98	3.29	4.60	5.91	7.23	9.13	9.85	11.16	12.48	13.79	15.10
52	HEIGHT (INCHES)	2.15	3.58	5.01	6.44	7.87	9.89	10.73	12.16	13.59	15.02	16.45
56	HEIGHT (INCHES)	2.33	3.88	5.42	6.97	8.52	10.65	11.61	13.16	14.71	16.25	17.80
60	HEIGHT (INCHES)	2.51	4.17	5.84	7.50	9.16	11.41	12.49	14.16	15.82	17.49	19.15
64	HEIGHT (INCHES)	2.68	4.47	6.25	8.03	9.81	12.18	13.37	15.15	16.94	18.72	20.50
68	HEIGHT (INCHES)	2.86	4.76	6.66	8.56	10.46	12.94	14.25	16.15	18.05	19.95	21.85
72	HEIGHT (INCHES)	3.04	5.05	7.07	9.09	11.10	13.70	15.13	17.15	19.17	21.18	23.20
76	HEIGHT (INCHES)	3.22	5.35	7.48	9.61	11.75	14.47	16.01	18.15	20.28	22.41	24.55
80	HEIGHT (INCHES)	3.39	5.64	7.89	10.14	12.39	15.23	16.89	19.14	21.39	23.64	25.90
84	HEIGHT (INCHES)	3.57	5.94	8.30	10.70	13.04	15.99	17.77	20.14	22.51	24.88	27.24
88	HEIGHT (INCHES)	3.75	6.23	8.72	11.27	13.77	16.87	18.65	21.14	23.62	26.11	28.59
92	HEIGHT (INCHES)	3.92	6.53	9.13	11.86	14.56	17.72	19.53	22.14	24.74	27.34	29.94
96	HEIGHT (INCHES)	4.10	6.82	9.54	12.46	15.41	18.57	20.41	23.13	25.85	28.57	31.29

FREE AREA TABLE (SQUARE FEET)
RATING INCLUDES THE EFFECT OF A BIRDSCREEN



WATER PENETRATION GRAPH
900 F.P.M. BEGINNING OF WATER PENETRATION
(10.23 MPH WIND)



AIR PERFORMANCE GRAPH

THE INFORMATION CONTAINED ON THIS DATA SHEET REMAINS THE PROPERTY OF WESTERN VENTILATION PRODUCTS LTD. AND IS PROTECTED BY COPYRIGHT. WESTVENT AIR PERFORMANCE RATINGS SHOWN ARE BASED ON TESTS MADE BY TECHNICIANS IN OUR TEST LABORATORY.