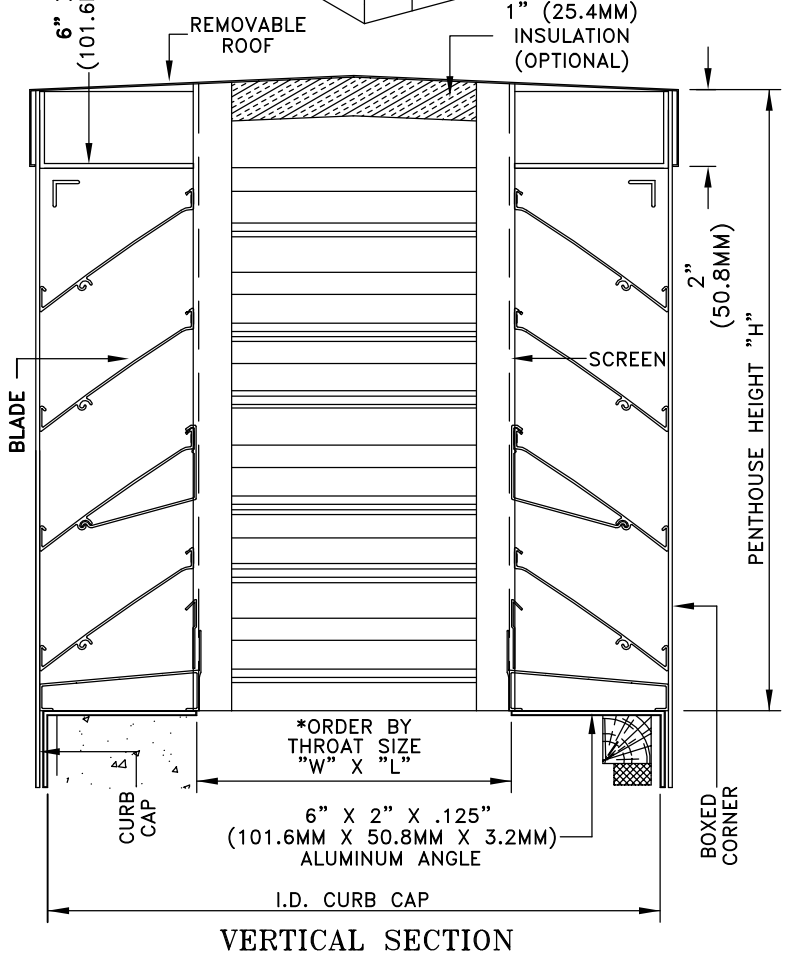
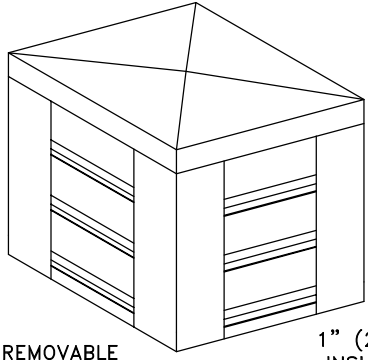




# PENTHOUSE MODEL P2-XT-635V (BOX CORNERS)



**STANDARD SPECIFICATIONS**

- CONST - 6063-T5 EXTRUDED ALUMINUM, WELDED ASSEMBLY  
CURB CAP - 6" X 2" (152.4MM X 50.8MM) FORMED ALUMINUM ANGLE
- BLADES - 635V - 6" X .081", (152.4MM X 2.1MM) SET AT 35°, 4.5" (114.3MM) BLADE SPACING, TYPE "V" CARRIES WATER TO SIDE DRAIN CHANNELS AT CENTER, SUPPORTS AT 48" (1219.2MM) CENTERS
- SCREEN - .75" (19.1MM) X 18 GAUGE GALVANIZED, SCREW FASTENED INSIDE
- ROOF - FORMED SHEET ALUMINUM, GALV. STEEL MAY BE SUBSTITUTED WHEN PRODUCT IS PAINTED
- FINISH - MILL ALUMINUM
- SIZE - MIN. 12W X 12L X 16" H (304.8MM X 304.8MM X 406.4MM) MAX. 96" X 144" X 96" (2438.4MM X 3657.6MM X 2438.4MM)

**OPTIONS**

- CONST. - HEAVIER MATERIAL
- BLADES - 3MM BLADES
- ROOF - 1" (25.4MM) INSULATION
- SCREEN - .5" X .5" (12.7MM X 12.7MM) ALUMINUM AND OTHERS
- FINISH - PRIME COAT, BAKED ENAMEL

**TECHNICAL NOTES**

- MAX. REC. INTAKE VEL. - 1047 FPM THROUGH FREE AREA
- SHIPPING WEIGHT APPROX. 6 LBS/SQ. FT.

NOTE: (W + 11) & (L + 11) = INSIDE DIMENSION OF PENTHOUSE CURB CAP  
\*OUTSIDE DIMENSION OF ROOF CURB SHOULD BE 1" (25.4MM) SMALLER\*

\* FOR MORE INFORMATION, CONTACT OUR FACTORY \*

NOTES	APPROVAL
<p>DATE: PROJECT: ENGINEER: CUSTOMER: DISTRIBUTOR:</p>	

P2-XT-635V