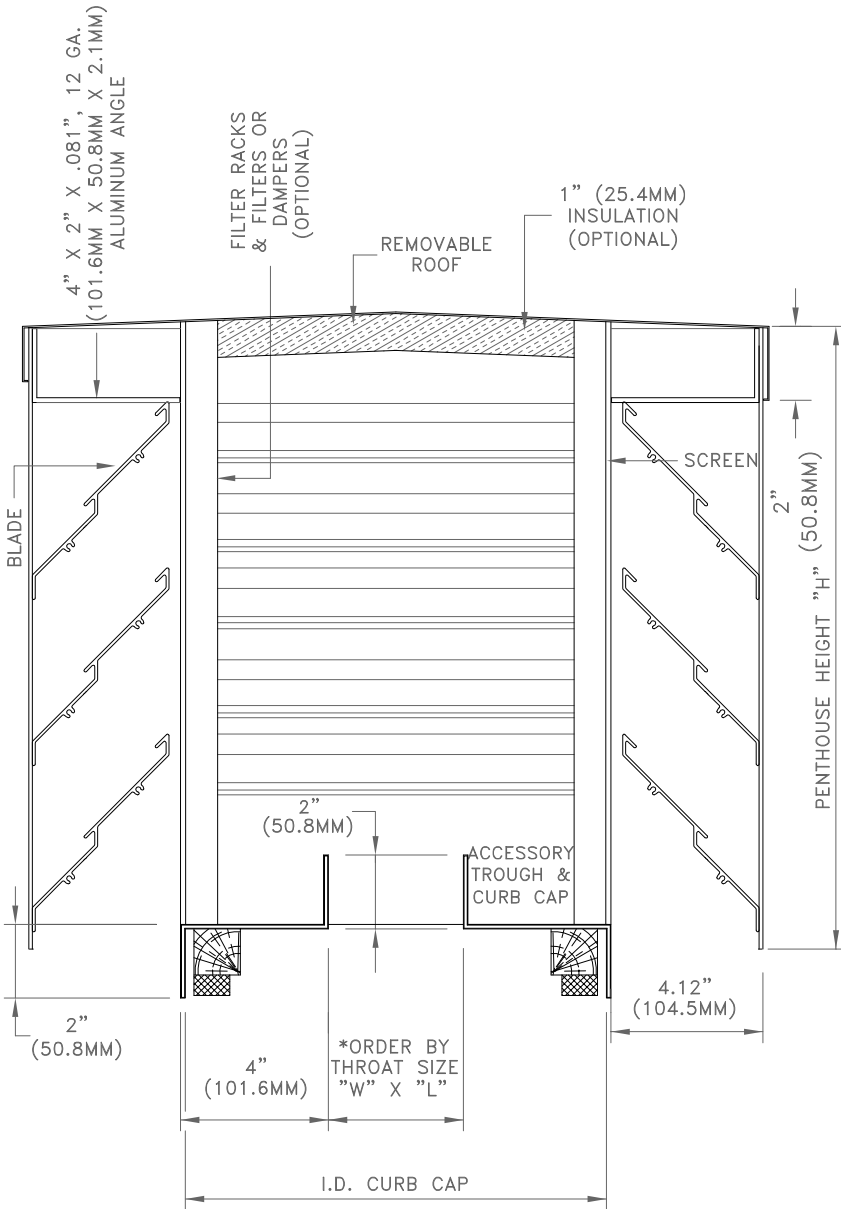




**PENTHOUSE
MODEL P4-XC-445W
(BOX CORNERS, LOW PROFILE)**



VERTICAL SECTION

NOTE: (W + 9) & (L + 9) = INSIDE DIMENSION OF PENTHOUSE CURB CAP
OUTSIDE DIMENSION OF ROOF CURB SHOULD BE 1" (25.4MM) SMALLER

STANDARD SPECIFICATIONS

- CONST. - 6063-T5 EXTRUDED ALUMINUM, WELDED ASSEMBLY
- CURB CAP - ACCESSORY THROUGH - FORMED 2" X 4" X 2" X .081", 12 GA. (50.8MM X 101.6MM X 50.8MM X 2.1MM) ALUMINUM
- BLADES - 445W - 4" X .081", 12 GA. (101.6MM X 2.1MM) EXTRUDED ALUMINUM SET AT 45°, 4.5" (114.3MM) BLADE SPACING, SUPPORTS AT 48" (1219.2MM) O/C. BLADES HAVE EXTRA WEATHER LIP AT CENTER
- SCREEN - .5" X .5" (12.7MM X 12.7MM) X 18 GA. GALVANIZED, SCREW FASTENED INSIDE
- ROOF - FORMED SHEET ALUMINUM, GALV. STEEL MAY BE SUBSTITUTED WHEN PRODUCT IS PAINTED
- FINISH SIZE - MILL ALUMINUM
- MINIMUM 12 "W" X 12 "L" X 16" H (304.8MM X 304.8MM X 406.4MM)
- MAXIMUM 96" X 144" X 96" (2438.4MM X 3657.6MM X 2438.4MM)

OPTIONS

- CONST. - SPECIAL EFFECTS - BDX-3C3-LB BACKDRAFT DAMPERS
- BLADES - 3MM BLADES
- ROOF - 1" (25.4MM) INSULATION
- SCREEN - AS PER REQUEST
- FINISH - PRIME COAT, BAKED ENAMEL

TECHNICAL NOTES

- DESIGN - LOW PROFILE DESIGN
- MAX. REC. INTAKE VEL. - 700 FPM THROUGH FREE AREA
- SHIPPING WEIGHT - APPROX. 6 LBS./SQ. FT. OF LOUVER FACE AREA PLUS 10%

* FOR MORE INFORMATION, CONTACT OUR FACTORY *

NOTES

APPROVAL

DATE:
PROJECT:
ENGINEER:
CUSTOMER:
DISTRIBUTOR:

P4-XC-445W