

**PENTHOUSE  
MODEL XC-445V  
(MITERED CORNERS)**

**STANDARD SPECIFICATIONS**

- CONST. - 6063-TS EXTRUDED ALUMINUM, WELDED ASSEMBLY
- CURB CAP - 4" X 2" X .125" (101.6MM X 50.8MM X 3.2MM) EXTRUDED ALUMINUM ANGLE
- BLADES - 445V - 4" X .081", 12 GAUGE (101.6MM X 2.1MM) EXTRUDED ALUMINUM SET AT 45° 3.5" (88.9MM) BLADE SPACING, TYPE "V" CARRIES WATER TO SIDE DRAIN CHANNELS AT CENTER, SUPPORTS AT AT 48" (1219.2MM) CENTERS
- SCREEN - .5" X .5" (12.7MM X 12.7MM) X 18 GAUGE GALVANIZED, SCREW FASTENED INSIDE
- ROOF - FORMED SHEET ALUMINUM, GALV. STEEL MAY BE SUBSTITUTED WHEN PRODUCT IS PAINTED
- FINISH SIZE - MILL ALUMINUM  
- MIN. 12 "W" X 12 "L" X 16" H (304.8MM X 304.8MM X 406.4MM)  
- MAX. 96" X 144" X 96" (2438.4MM X 3657.6MM X 2438.4MM)

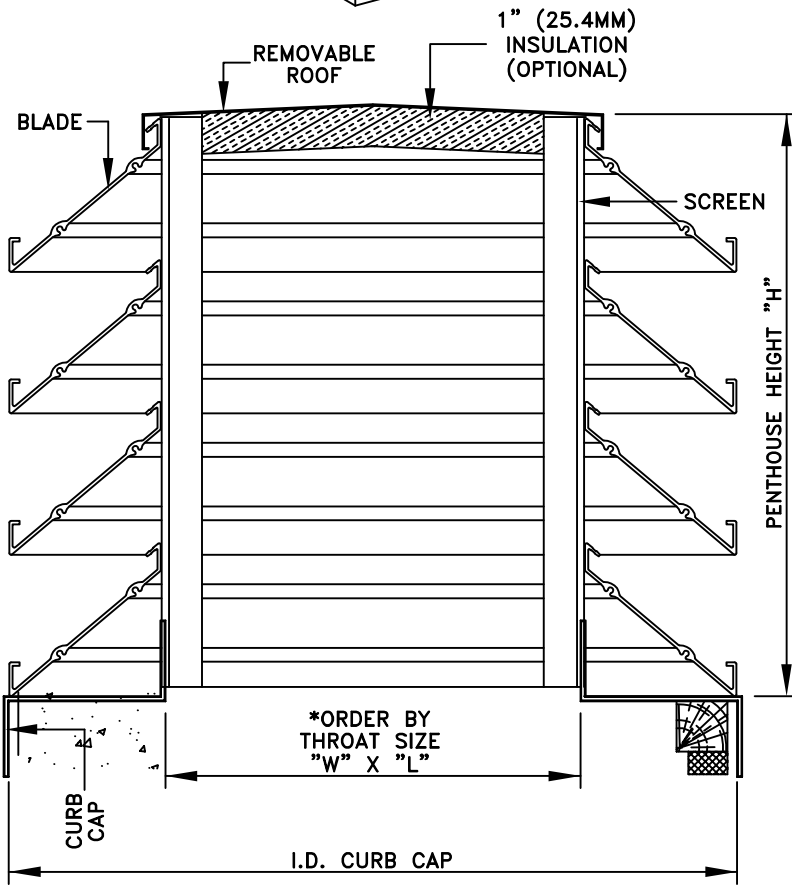
**OPTIONS**

- CONST. - HEAVIER MATERIAL
- BLADES - 3MM BLADES
- ROOF - 1" (25.4MM) INSULATION
- SCREEN - .5" X .5" (12.7MM X 12.7MM) ALUMINUM AND OTHERS
- FINISH - PRIME COAT, BAKED ENAMEL

**TECHNICAL NOTES**

- MAX. REC. INTAKE VEL. - 1087 FPM THROUGH FREE AREA
- SHIPPING WEIGHT - APPROX. 5 LBS./SQ. FT. OF LOUVER FACE AREA PLUS 10%

\* FOR MORE INFORMATION, CONTACT OUR FACTORY \*



**VERTICAL SECTION**

NOTE: (W + 9) & (L + 9) = INSIDE DIMENSION OF PENTHOUSE CURB CAP  
\*OUTSIDE DIMENSION OF ROOF CURB SHOULD BE 1" (25.4MM) SMALLER\*

**NOTES**

**APPROVAL**

DATE:  
PROJECT:  
ENGINEER:  
CUSTOMER:  
DISTRIBUTOR:

P1-XC-445V